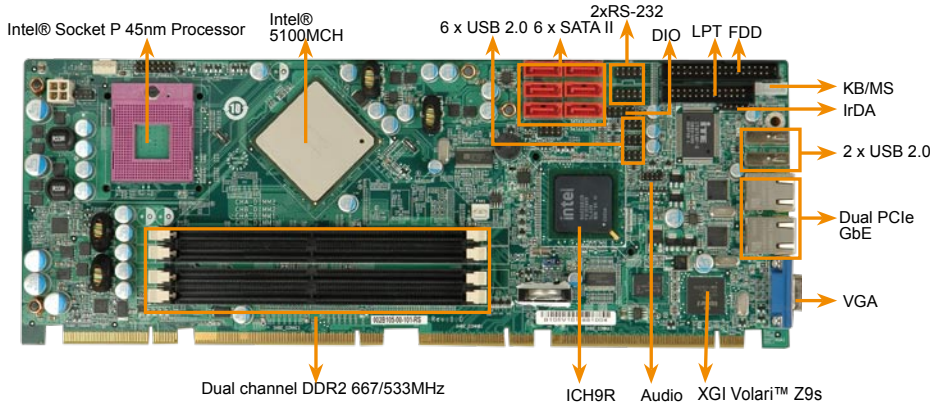


# SPCIE-5100P

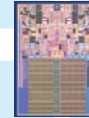
Full-size PICMG1.3 CPU card supports socket P Intel® 45nm Core™2 Duo processors and comes with VGA, Dual PCIe GbE, SATA II with RAID function, USB and Audio



## Intel® Core™2 Duo Processor (Penryn) Features

**Intel® Core™2 Duo family processor**  
New micro-architecture features for greater performance and new capabilities

**Intel's First 45nm micro processors**  
High-k + metal gate transistors - breakthrough technology that significantly reduces leakage power



Penryn processor

**Up to 6MB L2 Cache & 1066 FSB**  
Larger L2 & higher FSB deliver higher performance

**Improved Performance**  
Performance and energy efficiency lead established by Intel® Core™2 family processors



FSB 1066

DDR2 667

ECC Support

Socket P



Intel® Matrix Storage Manager

## Specifications

- ◆ CPU  
Socket P Intel® Core™2 Duo processors (Penryn core) with a 1066/800/667MHz FSB
- ◆ System Chipset  
Intel® 5100 MCH (San Clemente) + ICH9R chipsets
- ◆ BIOS  
AMI Flash BIOS
- ◆ System Memory  
Four 240-pin 667/533 MHz dual-channel DDR2 SDRAM DIMM supported (system max. 8GB) with ECC checking
- ◆ Ethernet  
Dual PCIe Ethernet support by Intel® 82574L GbE
- ◆ I/O Interface  
2 x RS-232  
8 x USB 2.0  
6 x SATA II with RAID 0,1, 5 and 10  
1 x LPT  
1 x FDD  
1 x 6-pin header for KB/MS
- ◆ Digital I/O  
8 bit digital I/O, 4-bit input/ 4-bit output
- ◆ Infrared  
1 x Infrared by pin header
- ◆ Super I/O  
ITE IT8718F
- ◆ Display Interface  
VGA support by XGI Volari Z9s Graphic controller with 64MB DDR2 Memory  
Support VGA resolution support up to 1600x1200
- ◆ Audio  
Support by 7.1 channel HD Audio Kit
- ◆ SSD  
N/A
- ◆ Watchdog Timer  
Software programmable supports 1 ~255 sec. System reset
- ◆ Power Supply  
ATX Power
- ◆ Power consumption  
3.3V@0.62A, 5V@4.69A, 12V@2.32A (Intel® Core™2 Duo P8600 2.4GHz 1066MHz FSB CPU with 8GB DDR2 667MHz)
- ◆ Temperature  
operation: 0°C ~ 60°C ( 32°F ~ 140°F)
- ◆ Humidity  
operation: 5% ~95% non-condensing
- ◆ Dimension  
338 mm x 126 mm
- ◆ Weight  
GW: 1200 g / NW: 420 g

## Features

1. PICMG1.3 Full size Ultra Low power Server Grade Solution
2. Intel® 45nm Socket P Core™2 Duo (Mobile Penryn) processor with a 1066MHz FSB
3. Intel® 5100 server-grade platform supports six PCIe x4 lanes for flexible PCIe application
4. ULV XGI Volari Z9s Graphic controller support VGA output
5. Four 240-pin DIMM Socket SDRAM with ECC checking are supported
6. Six SATA II with RAID function improved performance and reliability for systems

## Packing List

1 x SPCIE-5100P Single Board Computer
1 x Mini Jumper Pack
6 x SATA cable (P/N: 32000-062800-RS)
1 x Dual RS-232 cable (P/N: 19800-000051-RS)
1 x USB Cable (P/N: CB-USB02-RS)
1 x Utility CD
1 x QIG

## Ordering Information

Part No.	Description
SPCIE-5100P-R10	Full-size PICMG1.3 CPU card supports socket P Intel® 45nm Core™2 Duo processors and comes with VGA, Dual PCIe GbE, SATA II with RAID function, USB and Audio
CF-479B-RS	CPU cooler (50mm x 50mm x 26mm, 50W)
AC-KIT883HD-R10	7.1 Channel HD Audio Kit with Realtek ALC883 support dual audio streams
32200-000017-RS	FDD cable
19800-000049-RS	LPT cable
19800-000075-RS	KB/MS cable with bracket
32100-088600-RS	SATA Power cable