

PM-P001

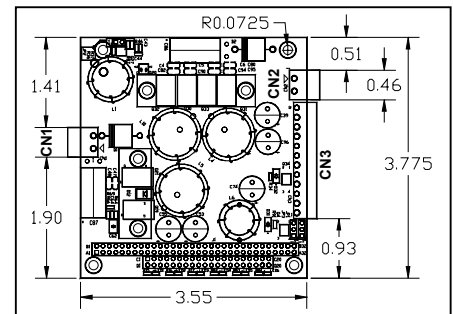
PC/104 100W DC to DC Converter Module



Features

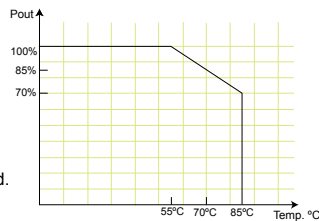
1. High Efficiency up to 96%
2. Over Voltage Protection
3. Over Current Protection
4. Input Power Protection
5. Short Circuit Protection
6. Low Quiescent Current
7. Low EMI & RFI
8. RoHS Compliant
9. Remote On/Off
10. AT or ATX Mode
11. Non-isolated Type

Dimensions (Inches)



Specifications

- Output: 5V@12A (Max.), 12V@2.5A (Max.), 5VSB@1A (Max.) & -12V@ 500mA(Max.)
Max. Total Output: 100W
- Input: 8VDC to 36VDC
- Performance Characteristics
Line Regulation: <40mV*
Load Regulation: <150mV
Efficiency: up to 95%
Quiescent Current: <1mA**
* Measure on 5V output
** The LEDs and the 5VSB are disabled.
- Remote On/Off (jumper select) signal PS_ON control Power On/Off Active High or Active Low
- Dimensions: 3.775" X 3.55"
- Weight: GW: 440g; NW: 178g
- Operating Temperature: -40°C ~ 85°C



PIN Assignments

Primary Input Power Terminal

CN1	Pin1	Pin2
	GND	VIN1

Secondary Input (Pass thru.)

CN2	Pin1	Pin2
	GND	VIN2

Output Power Terminal

CN3	Pin1	Pin2	Pin3	Pin4	Pin5	Pin6
	PW_OK	PS_ON	GND	-12V	GND	+12V
	Pin7	Pin8	Pin9	Pin10	Pin11	Pin12
	GND	GND	+5V	+5V	5VSB	GND

Ordering Information

Part No.	Description
PM-P001-R10	100W DC/DC 8-36VDC input; 12V, 5V, -12V, 5VSB output

Packing information

1 x PM-P001

1 x Manual

PM-P002

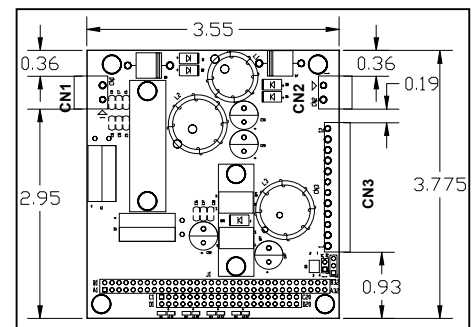
PC/104 100W DC to DC Converter Module



Features

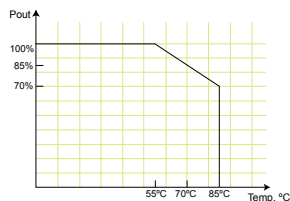
1. High Efficiency up to 90%
2. Over Voltage Protection
3. Over Current Protection
4. Input Power Protection
5. Short Circuit Protection
6. Low Quiescent Current
7. Low EMI & RFI
8. RoHS Compliant
9. Remote On/Off
10. Non-isolated Type

Dimensions (Inches)



Specifications

- Output: 5V@8A (Max.), 12V@5A (Max.)
Max. Total Output: 100W
- Input: 8VDC to 36VDC
- Performance Characteristics
Line Regulation: <20mV*
Load Regulation: <150mV
Efficiency: up to 90%
Quiescent Current: <2mA**
* Measure on 5V output
** The LEDs are disabled.
- Remote On/Off (jumper select) signal PS_ON control Power On/Off Active High or Active Low
- Dimensions: 3.775" X 3.55"
- Weight: GW: 432g; NW: 170g
- Operating Temperature: -40°C ~ 85°C



PIN Assignments

Primary Input Power Terminal

CN2	Pin1	Pin2
	GND	VIN2

Secondary Input (Pass thru.)

CN1	Pin1	Pin2
	GND	VIN1

Output Power Terminal

CN3	Pin1	Pin2	Pin3	Pin4	Pin5	Pin6
	PW_OK	PS_ON	GND	+12V	+12V	GND
	Pin7	Pin8	Pin9	Pin10	Pin11	Pin12
	GND	+5V	+5V	+5V	+5V	GND

Ordering Information

Part No.	Description
PM-P002-R10	100W DC/DC 8-36VDC input; 12V, 5V output

Packing information

1 x PM-P002

1 x Manual