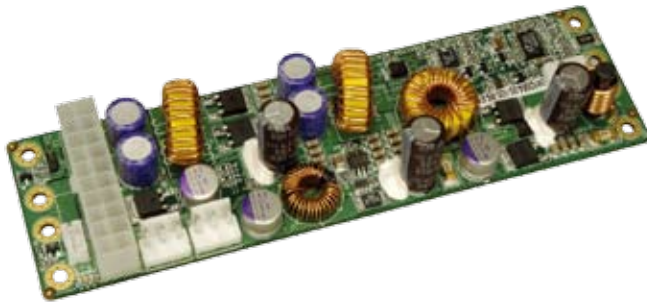


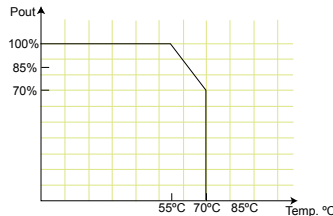
IDD-9364120A

120W DC/DC Converter Module



Specifications

- Output: 12V@4A (Max.), 5V@10A (Max.), 3.3V@8A (Max.), -12V@0.3A (Max.) & 5VSB@2A (Max.)
Max. Total Output: 120W
- Input: 9VDC to 36VDC
- Performance Characteristics
Noise & Ripple: <240mV
Line Regulation: <50mV
Load Regulation: <100mV
Efficiency: Up to 90%
- Dimensions: 45mm x 160mm
- Weight: NW: 104g
- Operating Temperature: -20°C ~ 70°C



PIN Assignments

Input Power Connector

CN4	Pin 1	Pin 2	Pin 3	Pin 4
	VIN	VIN	GND	GND

Output Power Connector

CN1 CN2	Pin 1	Pin 2	Pin 3
	+5V	GND	+12V

J1	Standard 20pins ATX
	Standard 20pins ATX

ATX Mode Connector

CN3	Pin 1	Pin 2	Pin 3
	5VSB	GND	PS_ON

Wire Harness Selection Guide

DC Input (CN4)

- Options 1.**
PN: **CB-P1LP4-RS**
Cable for FSP0601AD101C 60W/ UP0451E12P 45W/UP0251E12PL 25W AC-DC adapter
- Options 2.**
PN: **CB-MD4P4-RS**
Cable for 63000-FSP120AAB-RS 120W AC-DC adapter
- Options 3.**
PN: **CB-NOLP4-RS**
Cable for Terminal Block

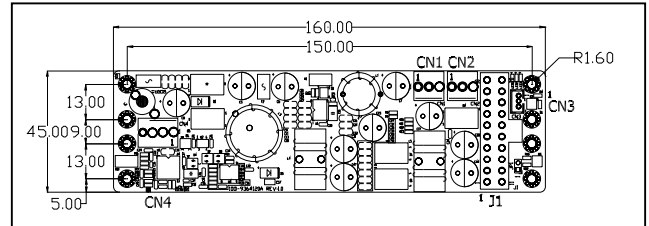
SBC Main Power (J1)

- Options 1.**
PN: **CB-ATX20P-RS**
20 Pins ATX to 20 Pins ATX Cable

Features

1. Wide Input Range: 9-36V DC
2. AT or ATX Mode On/Off
3. Output Voltage Protection
4. Up to 90% Efficiency
5. RoHS Compliant
6. Compact Size

Dimensions (Millimeters)



Packing information

- 1 x IDD-9364120A
- 1 x QIG

Ordering Information

Part No.	Description
IDD-9364120A-R10	120W DC/DC 9~36V input; 12V, 5V, 3.3V, -12V & 5VSB output
CB-JST3PSW-RS	30cm Cable ON/Off Switch
CB-JST3P001-RS	30cm 5VSB, PS_ON Wire to SBC
CB-3PSATA-RS	10cm Cable for SATA Power
CB-3PIIDE-RS	10cm Cable for IDE HDD Power
CB-P1LP4-RS	20cm Cable for FSP0601AD101C 60W/ UP0451E12P 45W/UP0251E12PL 25W AC-DC adapter
CB-MD4P4-RS	20cm Cable for 63000-FSP120AAB-RS 120W AC-DC adapter
CB-NOLP4-RS	20cm Cable for Terminal Block DC Input
CB-ATX20P-RS	30cm 20 Pins ATX to 20 Pins ATX Cable

I/O Power (CN1 & CN2)

- Options 1.**
PN: **CB-3PSATA-RS**
Cable for SATA
- Options 2.**
PN: **CB-3PIIDE-RS**
Cable for IDE HDD or any STD 4 pins I/O devices

Power On/Off (CN3)

- Options 1.**
PN: **CB-JST3PSW-RS**
Cable with On/Off Switch
- Options 2.**
PN: **CB-JST3P001-RS**
Cable to SBC (5VSB & PS_ON)