

NCp-501, NCp-201

20MP / 8MP 180° Multisensor Panoramic Cameras



Main Features

- 20MP and 8MP models are available
- High Resolution 180° Coverage
- Smart IR distance effective up to 30M
- Single IP Address Output for ease of integration with VMS



Product Overview

NCp-501 and NCp-201 are new multisensor panoramic cameras to offer four sensors for a total high resolution 20MP and 8MP. NCp-501 and NCp-201 can provide 180° coverage with fix-focus lens to capture excellent images. Especially, they are built-in Smart IR function with IR distance effective up to 30 meter (89ft). It is available in outdoor using scenario and suitable for building/hospital/public transportation/parks/tourist attractions surveillance solutions.

H.265++/H.264++

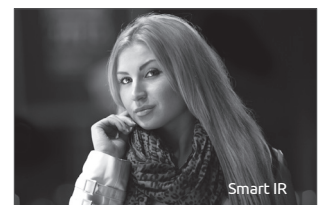
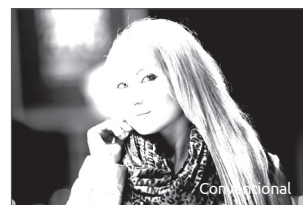
Coming soon!

H.265++/H.264++ is the latest next generation of video compression technology. This technology could reduce bandwidth to perform excellent video compression rate with lower storage consumption. Comparing the traditional H.265/H.264, this new technology can save over 50% data flowloading. This helps to enhance IP camera total system performance dramatically.



Smart IR (with SR LEDs)

NCp-501 and NCp-201 are built-in IR to provide clear image output at night. Smart IR is superior to the traditional IR by automatically adjusting IR output in response to the distance of the object in view. This will avoid object over-exposure commonly seen in cameras using traditional IR functions. Using SR LEDs, it provides several advantages including a clearer view on the edge of images, 75% energy cut, five times longer lifetime, and smaller in size, compared to cameras using convention IR LEDs.



Single IP Address Output

NCp-501 and NCp-201 are combined with 4 camera modules to offer one single IP Address output. This feature benefits for clients saving more cost to integrate with VMS, no extra license fee would be charged.

Specifications

Camera General Information

Image Sensor	NCp-501: 20MP, 4pcs 1/1.8" 5MP CMOS progressive sensor NCp-201: 8MP, 4pcs 1/2.7" 2MP CMOS progressive sensor
Coverage	180°
Lens	NCp-501: 4 Fixed Lens 5.5mm F1.8 NCp-201: 4 Fixed Lens 6.0mm F2.0
FOV	TBD
Pan/Tilt	Pan 0° ~ 355° / Tilt 0° ~ 180°
Smart IR	Effective distance is up to 30M (98ft)
IR Wavelength	850nm (8pcs SR LEDs)
Day and Night	Yes
WDR	Support
Minimum Illumination	B/W 0 lux / Color 0.1 lux @F1.8 1/15 sec
Electronic Shutter Speed	Auto/Manual 1/3.75~1/10000
Gain Control	Auto/Manual
Backlight Compensation	Yes
White Balance Mode	Auto/Manual
Image Setting	Brightness, Contrast, Saturation, Sharpness, Mirror, Flip

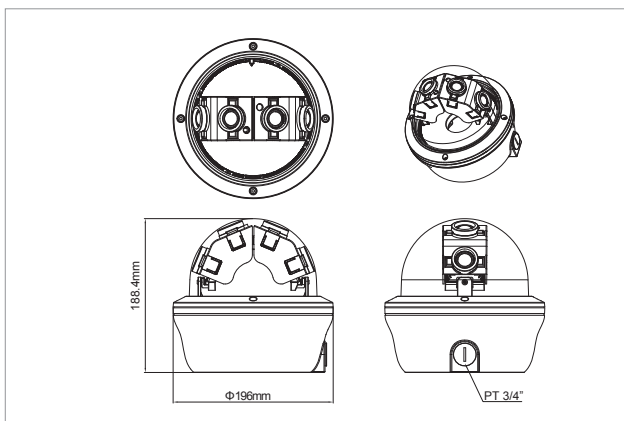
Video

Video Compression	H.265/H.264
Video Streaming	Triple Streaming
Video Quality	VBR/CBR
Frame Rate	NCp-501: 20MP @30fps NCp-201: 8MP @30fps

Network

Interface	10/100 Mbps Ethernet, RJ45
Support Protocols	TCP/IP, UDP, ICMP, IPv4, IPv6, SNMP v2c/v3, QoS, HTTP, HTTPS, LDAP (client), SSH, SSL, SMTP, FTP, RTSP, UPnP, DNS, NTP, RTP, RTCP, DynDNS, Zero Configure
ONVIF	Profile S, Q, G
Users	Live Viewing/Administrator for up to 10 clients
Browsers	Internet Explorer, Google chrome, Mozilla Firefox

Dimension Drawing



Event Management

Event Trigger	Motion detection 5x5 areas Tampering detection
Notifications	Send message via e-mail or FTP

Power

DC/AC	DC12V/AC24C terminal block
PoE	Yes / IEEE 802.3at (PoE+)

General

Power Consumption	TBD
Weight	1600g
Dimension	Ø 196 mm x 188.4 mm (H)
Operating Temp.	-40°C ~ 60°C (-40°F ~ 140°F)
Storage Temp.	-40°C ~ 60°C (-40°F ~ 140°F)
Humidity	90%RH (no condensation)
Certification	CE/FCC
Vandal Resistance	IK10
Waterproof	IP66
Application	SDK available for application development

Packaging Information

NWT	1600g
GWT	1750g
Dimension	230x230x234 mm

Accessories (Optional)



Ordering Information