

Marketing Datasheet

Power Supply Unit



IEC Protection	Class II
Input Voltage	90-264 VAC
Input Current	2.5 A @ 115 VAC 1.2 A @ 230 VAC
Input Frequency	47-63 Hz
Output Voltage	28 VDC +/-5%
Output Current	7.86 A (max) +/- 5%
Storage Temperature	-20°C to 80°C (-4°F to 176°F)
Operating Temperature	0°C to 60°C (32°F to 140°F)
MTBF:	100,000 hrs (at full load 25°C Ambient)
Net Weight:	1.0 kg
Compliance	CE, ES 60601-1 IEC 60601-1: 2005 EN 60601-1: 2006 IEC 60601-1-2

The Geni-Tec 220W AC/DC switching power supply provides 220 watts of continuous output power. It is enclosed in a 94V-0 rated polycarbonate case with an inlet to mate with an interchangeable cord for worldwide use.

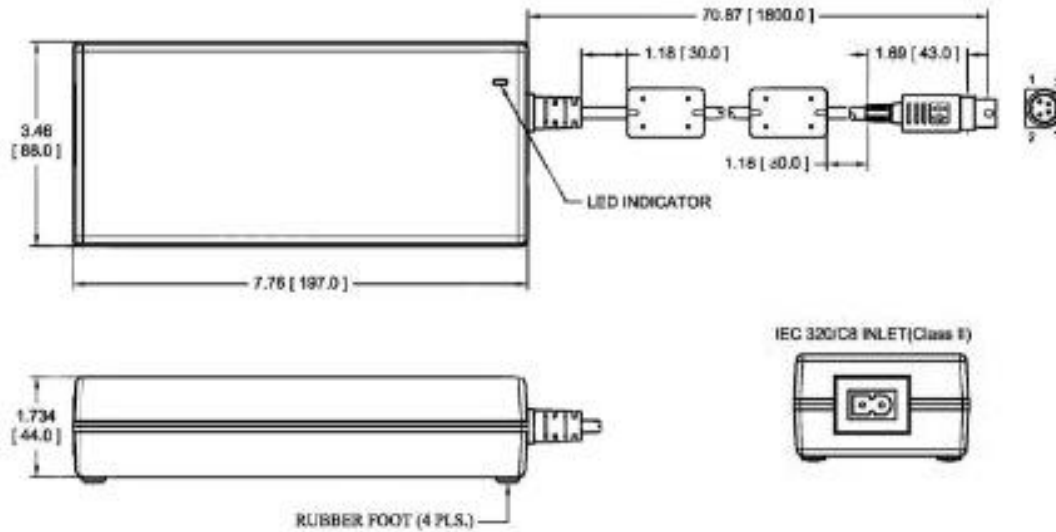
The PSU meets EN 55011 and FCC class B emission limits, and is designed for medical applications (not for life-supporting equipment).

Features

- High efficiency
- Low ripple & noise
- Overvoltage protection
- Short -circuit protection
- Overpower protection
- Overcurrent protection
- Over temperature protection
- 100% burn-in at full rated load
- Standby consumption less than 0.5 W
- Compliant with CEC and ENERGY STAR efficiency level V requirements
- Compliant with RoHS requirements

Customization

For customisation options please contact the sales team on +44 (0) 1737 378 820



Ordering Information	
Description	Part Number
Geni-Tec 220W AC/DC Power Supply <i>Note: Regional power cable must be ordered separately</i>	GEN-PSU-220
Black, 2m straight IEC Cable 3 pin UK termination	CAB-IEC-2MC7-UK
Black, 2m straight IEC Cable 2 pin US termination	CAB-IEC-2MC7-US
Black, 2m straight IEC Cable 2 pin EU termination	CAB-IEC-2MC7-EU
<i>Note: High visibility and coiled cables upon request</i>	

Customization

For customisation options please contact the sales team on +44 (0) 1737 378 820