

IES-1041FX / 1042FX Series



IES-1041FX Series



IES-1042FX Series

Industrial slim type 5-port/6-port unmanaged Ethernet switch

Features

- IES-1041FX series provide 4x10/100Base-T(X) and 1x100Base-FX single/multi-mode fiber ports
- IES-1042FX series provide 4x10/100Base-T(X) and 2x100Base-FX single/multi-mode fiber ports
- Support auto-negotiation and auto-MDI/MDI-X
- Support store-and-forward transmission
- Support flow control
- Support surge protection technology
- Warning system by relay output
- Rigid IP-30 housing design
- DIN-Rail and wall mounting enabled

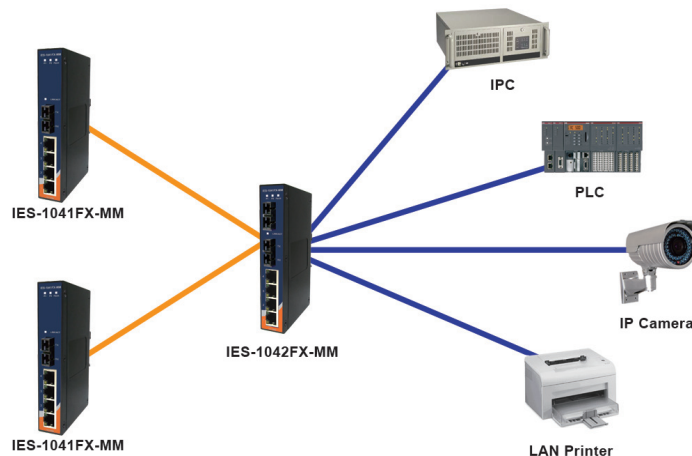


Introduction

IES-1041FX/1042FX series are unmanaged Ethernet switches with 4 x 10/100Base-T(X) and 100Base-FX ports. IES-1041FX/1042FX series support redundant power inputs, configurable relay output alarm and rigid IP-30 housing. In addition, the wide operating temperature range from -40 to 70°C can satisfy most of operating environment.

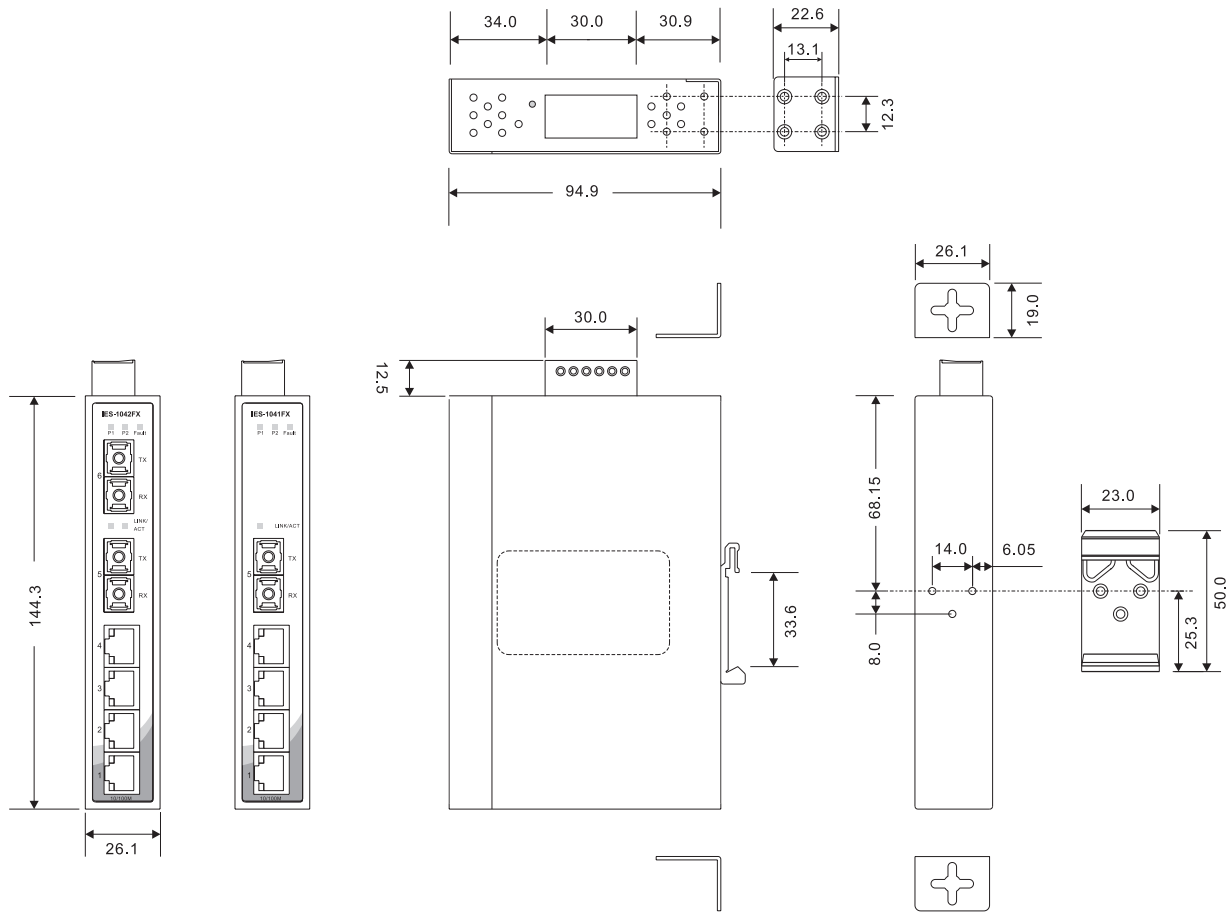
Practical Operation

IES-1041FX/1042FX series can be used in connecting several Ethernet devices like Ethernet I/O, IP-Camera or other Ethernet switches. In addition, there are two different power inputs at terminal block to avoid interruption caused by power down. When the primary DC power input fails, the backup power input will take over immediately to guarantee a non-stop operation.



Connections of Ethernet devices

Dimensions



(Unit=mm)

Specifications

| ORing Switch Model | | IES-1041FX-MM-SC | IES-1041FX-SS-SC | IES-1042FX-MM-SC | IES-1042FX-SS-SC |
|---|--|--------------------------|------------------|--------------------------|------------------|
| Physical Ports | | | | | |
| 10/100Base-T(X) Ports in RJ45 Auto MDI/MDIX | | 4 | 4 | 4 | 4 |
| Fiber Ports Specifications | Fiber Ports Number | 1 | 1 | 2 | 2 |
| | Fiber Ports Standard | 100Base-FX | 100Base-FX | 100Base-FX | 100Base-FX |
| | Fiber Mode | Multi-mode | Single-mode | Multi-mode | Single-mode |
| | Fiber Diameter (μm) | 62.5/125 μm 50/125 μm | 9/125 μm | 62.5/125 μm 50/125 μm | 9/125 μm |
| | Fiber Optical Connector | SC | SC | SC | SC |
| | Typical Distance (km) | 2 km | 30 km | 2 km | 30 km |
| | Wavelength (nm) | 1310 nm | 1310 nm | 1310 nm | 1310 nm |
| | Max. Output Optical Power (dBm) | -14 dBm | -8 dBm | -14 dBm | -8 dBm |
| | Min. Output Optical Power (dBm) | -23.5 dBm | -15 dBm | -23.5 dBm | -15 dBm |
| | Max. Input Optical Power (Saturation) | 0 dBm | 0 dBm | 0 dBm | 0 dBm |
| | Min. Input Optical Power (Sensitivity) | -31 dBm | -34 dBm | -31 dBm | -34 dBm |
| | Link Budget (dB) | 7.5 dB | 19 dB | 7.5 dB | 19 dB |

| Technology | | |
|-------------------------------------|--|---------|
| Ethernet Standards | IEEE 802.3 for 10Base-T IEEE 802.3u for 100Base-TX and 100Base-FX IEEE 802.3x for Flow control | |
| MAC Table | 2048 MAC addresses | |
| Processing | Store-and-Forward | |
| LED Indicators | | |
| Power Indicator | Green : Power LED x 2 | |
| Fault Indicator | Amber : Indicates PWR1 or PWR2 failure occurred | |
| 10/100Base-T(X) RJ45 Port Indicator | Green for port Link/Act. Amber for Duplex/Collision | |
| Fiber Port LED | Green for port Link/Act. | |
| Fault contact | | |
| Relay | Relay output to carry capacity of 1A at 24VDC | |
| Power | | |
| Redundant Input Power | Dual DC inputs: 12~48VDC on 6-pin terminal block | |
| Power Consumption (Typ.) | 5 Watts | 7 Watts |
| Overload Current Protection | Present | |
| Reverse Polarity Protection | Present | |
| Physical Characteristics | | |
| Enclosure | IP-30 | |
| Dimensions (W x D x H) | 26.1 (W) x 94.9 (D) x 144.3 (H) mm (1.03 x 3.74 x 5.68 inch.) | |
| Weight (g) | 378 g | 382 g |
| Environmental | | |
| Storage Temperature | -40 to 85°C (-40 to 185°F) | |
| Operating Temperature | -40 to 70°C (-40 to 158°F) | |
| Operating Humidity | 5% to 95% Non-condensing | |
| Regulatory Approvals | | |
| EMI | FCC Part 15, CISPR (EN55022) class A | |
| EMS | EN61000-4-2 (ESD), EN61000-4-3 (RS), EN61000-4-4 (EFT), EN61000-4-5 (Surge), EN61000-4-6 (CS), EN61000-4-8, EN61000-4-11 | |
| Shock | IEC60068-2-27 | |
| Free Fall | IEC60068-2-32 | |
| Vibration | IEC60068-2-6 | |
| Safety | EN60950-1 | |
| Warranty | 5 years | |

Ordering Information

IES-1 **AA** **B** **CC** - **DD** - **EE**

| Code Definition | 10/100Base-T(X) Port Number | Additional Port Number | Additional Port Type | Fiber Optical Mode | Fiber Optical Connector |
|-----------------|-----------------------------|---|--------------------------|---|----------------------------|
| Option | - 04 : 4 ports | - 1 : 1 port - 2 : 2 ports | - FX : 100Base-FX | - MM : Multi-mode - SS : Single-mode | - SC : SC connector |

| | Model Name | Description |
|-----------------|------------------|---|
| Available Model | IES-1041FX-MM-SC | Industrial 5-port slim type unmanaged Ethernet switch with 4x10/100Base-T(X) and 1x100Base-FX, multi-mode, 2km/1310nm, SC connector |
| | IES-1041FX-SS-SC | Industrial 5-port slim type unmanaged Ethernet switch with 4x10/100Base-T(X) and 1x100Base-FX, single-mode, 30km/1310nm, SC connector |
| | IES-1042FX-MM-SC | Industrial 6-port slim type unmanaged Ethernet switch with 4x10/100Base-T(X) and 2x100Base-FX, multi-mode, 2km/1310nm, SC connector |
| | IES-1042FX-SS-SC | Industrial 6-port slim type unmanaged Ethernet switch with 4x10/100Base-T(X) and 2x100Base-FX, single-mode, 30km/1310nm, SC connector |

Packing List

- IES-1041FX / 1042FX
- DIN-Rail Kit
- Wall-mount Kit
- Quick Installation Guide

Optional Accessories (Can be purchased separately)

- DR-45 series, 45W DIN-Rail power supply
- DR-75 series, 75W DIN-Rail power supply
- DR-120 series, 120W DIN-Rail power supply
- SDR-240-48, 240W DIN-Rail power supply
- SDR-480-48, 480W DIN-Rail power supply