

# GEST240LG-IR01-NT

## Estecom 24" Enclosed/Open Frame Monitor (VESA)

This Closed Frame monitor display employs the latest LCD technology to ensure high reliability and the best user experience

### Monitor Display w/ IRIS Board

Designed for demanding environments, the Estecom 24" Enclosed Monitor series w/ IRIS board delivers a long life cycle and high performance of video player experience to a wide range of commercial and industrial applications. The Estecom "Enclosed Monitor" series will lead you to dynamic digital world with instrument "drop-in" & "plug & play" designs.



### Features

- Estecom Controller Board : **IRIS**
- 1920 x 1080 (8 or 10 bit)
- 16:10 Aspect Ratio
- 1000 : 1 Contrast Ratio
- 300cd/m<sup>2</sup> (typ.) Brightness
- 89/89/89/89 (L/R/U/D)
- Durable Touch Screen : P-CAP
  - Options : Shadow Sense/ IR / SAW / 4 & 5 wire Resistive
  - Window 8 Plug & Play Touch Controller, USB
- Robust CNC milled enclosure by ventilation structure
- VESA Standard Mounting(Desk-top stand or Wall)
- Compliant with safety regulations

### Application

- Control Tower Monitoring
- Transportation (Bus & Train)
- Machinery & Equipment
- Information Kiosk
- Medical Cart & Station
- CCTV & Desk-Top
- Marine & Military



### Accessories (Option)



DVI



VGA



RS232



USB



Power Adaptor

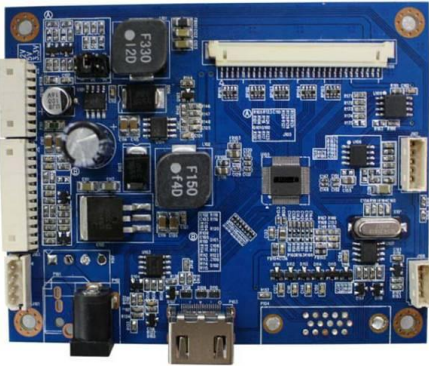


Power Cord  
(110V / 220V)

# GEST240LG-IR01-NT

## Controller Board

Model : IRIS



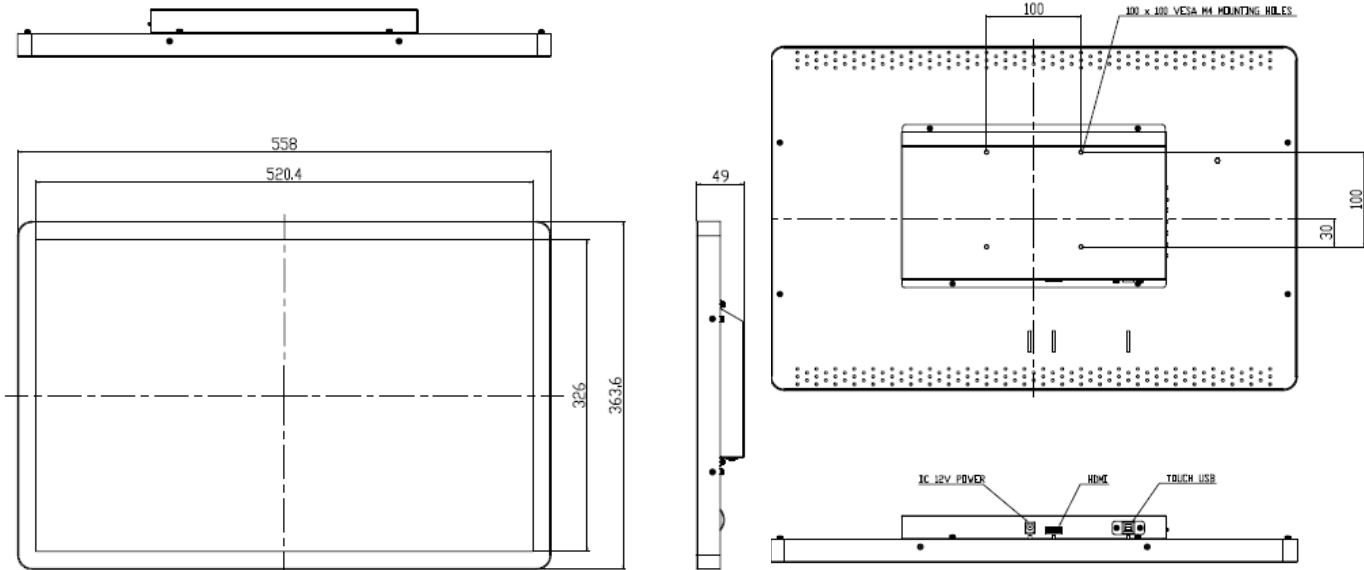
## Features

- support up to WUXGA @60Hz
- Input : RGB, HDMI (1.3)
- True color data processing & display driving
- Easy & Simple User interfaced OSD menu
- +24V input
- VESA DDC 1/2B compliant
- VESA DPMS power saving mode
- Simply applicable to FHD Digital Signage

## also compatible with others...

- ORCHID-D, MARIGOLD-D/I, POPPY-O/S II, Saffron, Crocus, A3188-S

## Dimensions | Mechanical Specifications | Cables



ESTECOM Open Frame series

**UNITED STATES HEADQUARTERS**

**SOUTH KOREA HEADQUARTERS**