

GEOA270AU-IR01

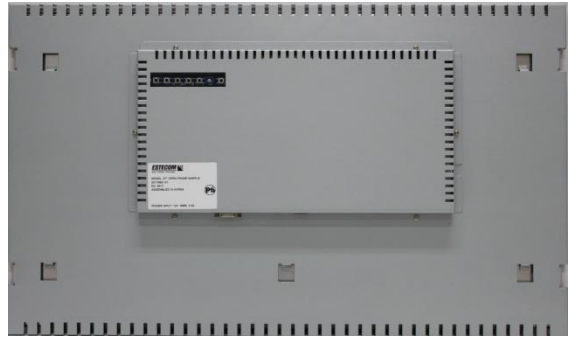
Estecom 27.0" Open Frame Monitor

This open frame monitor display employs the latest LCD technology to ensure high reliability and the best user experience

Open Frame Display w/ IRIS Board

Designed for demanding environments, the Estecom 27.0" Open Frame Monitor series w/ IRIS board delivers a long life cycle and high performance of video player experience to a wide range of commercial and industrial applications.

The Estecom "Open Frame Monitor" series will lead you to dynamic digital world with instrument "drop-in" designs.



Features

- Estecom Controller Board : **IRIS**
- 1920 x 1080 (8 bit)
- 16:9 Aspect Ratio
- 3000 : 1 Contrast Ratio
- 350cd/m² (typ.) Brightness
- 89/89/89/89 (L/R/U/D)
- Durable Touch Screen (**Option**)
 - P-CAP / IR / SAW / 4 & 5 wire Resistive. Shadow Sensor
 - Window 8 Plug & Play Touch Controller, USB
- Robust CNC milled enclosure by ventilation structure
- Other value-added options
- Compliant with safety regulations

Application

- Commercial Advertising DID
- Gaming & Amusement
- Digital Signage
- Information Kiosk
- Touch Table

Accessories (**Option**)



DVI



VGA



RS232



USB



Power Adaptor

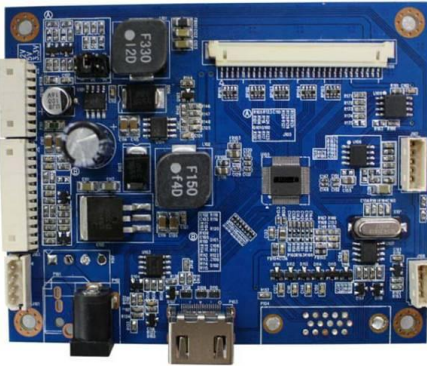


Power Cord
(110V / 220V)

GEOA270AU-IR01

Controller Board

Model : IRIS



Features

- support up to WUXGA @60Hz
- Input : RGB, HDMI (1.3)
- True color data processing & display driving
- Easy & Simple User interfaced OSD menu
- +24V input
- VESA DDC 1/2B compliant
- VESA DPMS power saving mode
- Simply applicable to FHD Digital Signage

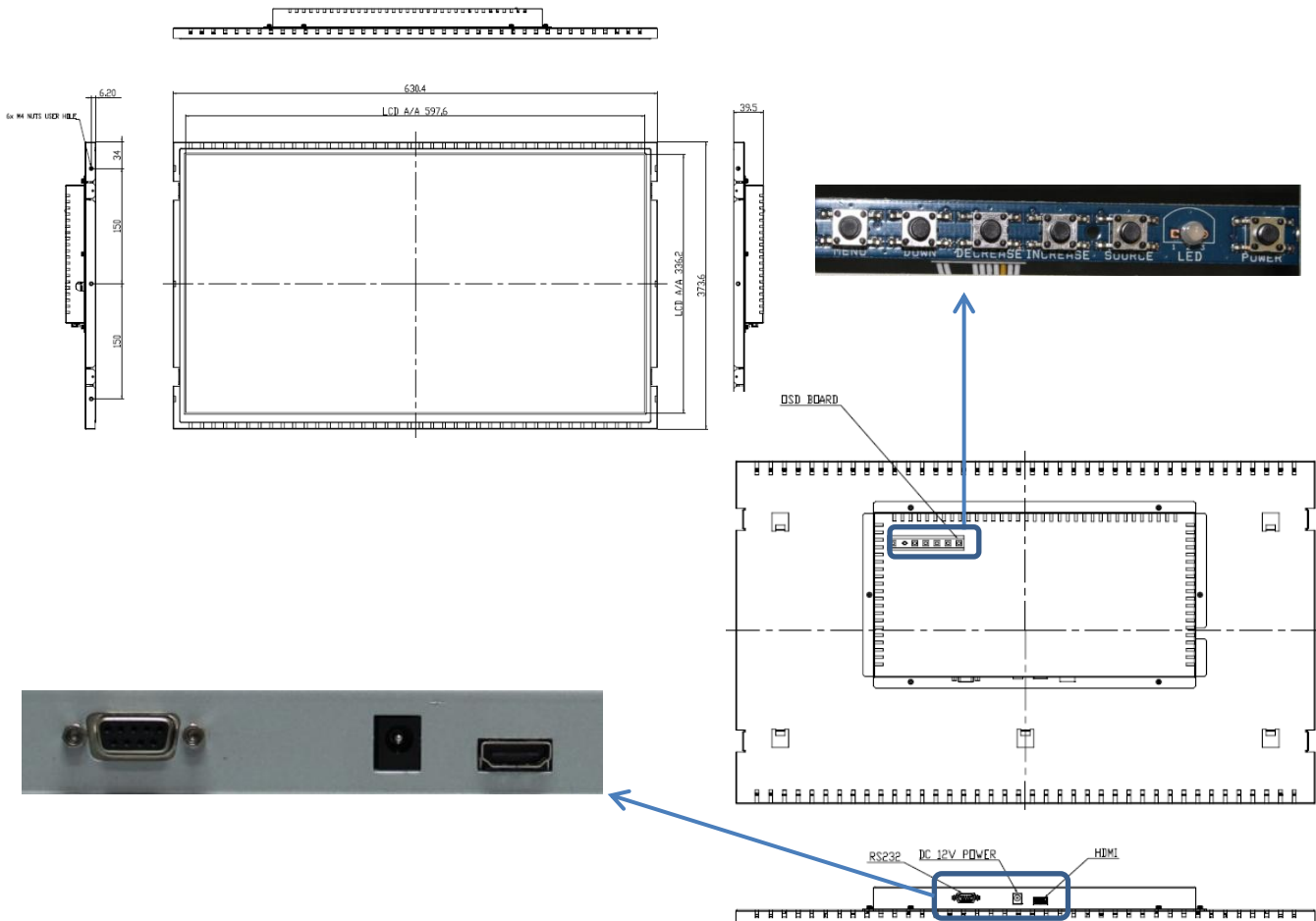
also compatible with others...

- ORCHID-D, MARIGOLD-D/I, POPPY-O/S II, SAFFRON, CROCUS, A3188-S

** "IVY" Board can be used together with all Estecom controller boards for additional features.

For more information, please contact sales@estecom.co.kr

Dimensions | Mechanical Specifications | Cables



ESTECOM Open Frame series

UNITED STATES HEADQUARTERS

991 Richard Avenue
Santa Clara, CA 95050
Phone: (408) 496-6723
Fax: (408) 457-6720

Product Info: www.estecom-usa.com
Sales Info: sales@estecom-usa.com
Technical Info: info@estecom-usa.com

SOUTH KOREA HEADQUARTERS

Rm705, 149, Gongdan-ro
Gunpo-si, Gyeonggi-do
15845
Seoul, South Korea

Phone: 82 31 427 8101 (-07)
Sales: sales@estecom.co.kr