

GEOA430LG-IR01

Estecom 43.0" Open Frame

This open frame monitor display employs the latest LCD technology to ensure high reliability and the best user experience

43.0" Open Frame Display with IRIS Board

Designed for demanding environments, the Estecom 43.0" Open Frame Monitor series w/ IRIS board delivers a long life cycle and high performance of video player experience to a wide range of commercial and industrial applications.

The Estecom "Open Frame Monitor" series will lead you to dynamic digital world with instrument "drop-in" designs.



Features

- Estecom Controller Board : **IRIS**
- 1920 x 1080 (8 bits RGB Stripe)
- 16:9 Aspect Ratio
- 1100 : 1 Contrast Ratio
- 450cd/m² (typ.) Brightness
- 89/89/89/89 (L/R/U/D)
- Durable Multi-Touch Screen **(Option)**
 - P-CAP / IR / SAW / 4 & 5 wire Resistive
 - Window 8 Plug & Play Touch Controller, USB
- Robust CNC milled enclosure by ventilation structure
- Other value-added options
- Compliant with safety regulations

Application

- Commercial Advertising DID
- Gaming & Amusement
- Indoor/Outdoor Digital Signage
- Information Kiosk
- Touch Table

Accessories (Option)



DVI



VGA



RS232



USB



Power Adaptor

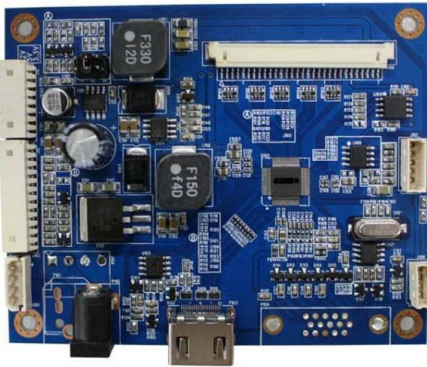


Power Cord
(110V / 220V)

GEOA430LG-IR01

Controller Board

Model : IRIS



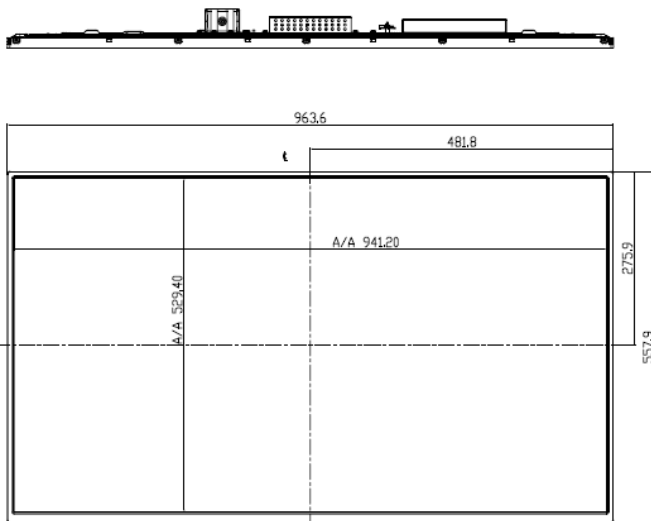
Features

- support up to WUXGA @60Hz
- Input : RGB, HDMI (1.3)
- True color data processing & display driving
- Easy & Simple User interfaced OSD menu
- +24V input
- VESA DDC 1/2B compliant
- VESA DPMS power saving mode
- Simply applicable to FHD Digital Signage

also compatible with others...

- ORCHID-D, MARIGOLD-D/I, POPPY-O/S II, SAFFRON, CROCUS(4K), A3188-S
- ** "IVY" Board can be used together with all Estecom controller boards for additional features.
For more information, please contact sales@estecom.co.kr

Mechanical Specification (Dimension)



62.40

