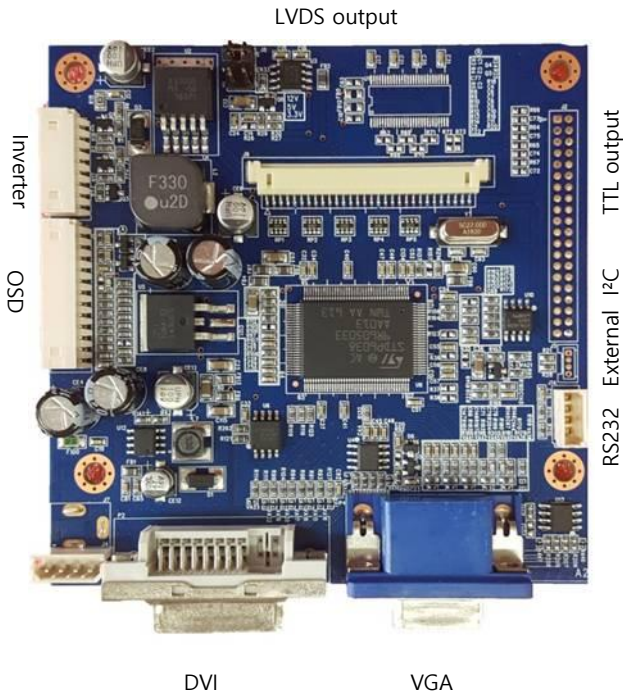




Estecom's controller board kit is a multi-purpose LCD controller that was designed for industrial LCD monitors and can be used for a number of industrial and commercial display applications. All solutions can be applied to open frame display that employs the latest LCD technology to ensure high reliability and the best user experience



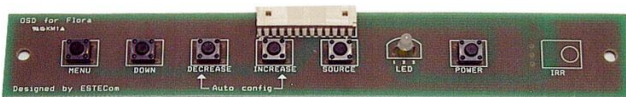
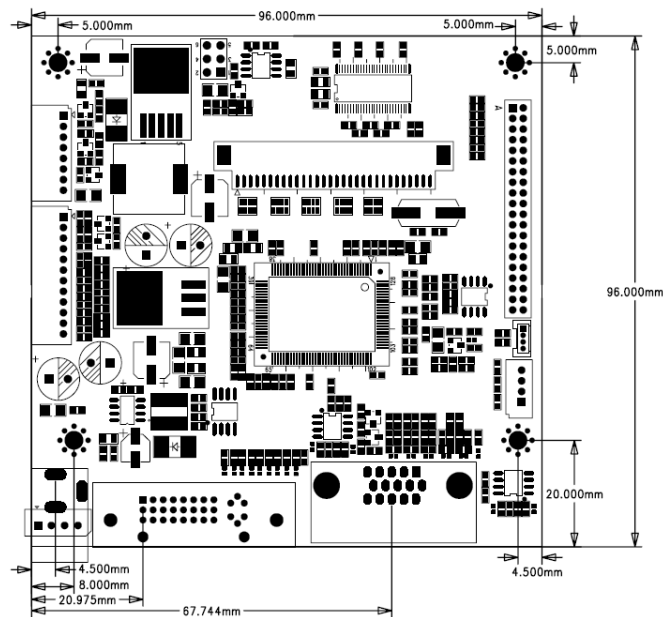
## Application

- Digital Signage
  - Perfect for Small & Medium size
- Video Wall & Entertainment
- Information & Advertising



## Features

- Model : POPPY-O II
- Analog RGB+DVI or HDMI / DP
- Support up to WUXGA @60Hz.
- Compatible standard SVGA, XGA & SXGA VESA timing.
- Easy & Simple user I/F OSD Menu.
- VESA DDC 1/2B compliant.
- Compliant to VESA DPMS Power "Energy" Saving Mode.
- Operating Temp. : -20 °C ~ 70 °C
- +12V DC single power.
- IR, UART & RS232 function integrated (full remote)



Menu(Enter)/Down(Auto Config.)/Decrease(Left)/Increase(Right)/Source Select(Exit)/Power

# Controller Board Kit Line-Up

Designed for demanding environments, the Estecom board series delivers a long life cycle and high performance of experience to a wide range of commercial and industrial applications. All range of boards can be easily implemented into "The Estecom Open Frame family series" will lead you to dynamic digital world with instrument "drop-in" designs.

	POPPY-OII	POPPY-S II (Sub-Board)	IRIS	ORCHID-D	MARIGOLD-I	MARIGOLD-D	SAFFRON	CROCUS	A3188-S (MMB)
									
Dimension (mm)	96 x 96	100 x 120 (31 x 170)	100 x 80	100 x 150	100 x 150	100 x 150	175 x 145	175x 145	133.3 x 70
Advantages	Compact Size w/ TTL support	Low Profile Perfect for Slim design	FHD signage	All Ground	F/W Upgrade Tool	F/W Upgrade Tool	Daisy chain w/ clone & distribution Best for Video Wall		VA & Cost-to-Benefit ratio solution
Key Features	RS232, IR	RS232, IR	RS232, IR	RS232, IR, LS*	HDMI, RS232, IR, LS*	DP, RS232, IR, LS*	Daisy chain w/ clone & distribution, PIP, RS232, LS*	HDMI 2.0, DP1.2, 4K	Android or Linux
Max. Resolution	1920 x 1200	1920 x 1200	1920 x 1200	1920 x 1200	1920 x 1200	1920 x 1200	<b>2560 x 1600</b>	<b>4096 x 2160</b>	1920 x 1080
Input	VGA/DVI	VGA/DVI/HDMI/DP	HDMI	VGA/DVI	VGA/HDMI/DP	VGA/DVI/DP	VGA/DVI/HDMI/DP	VGA/DPx2HDMI x 2	-
Output	LVDS(8bit) TTL	LVDS(8bit)	LVDS(8bit)	LVDS(8bit)	LVDS(8bit)	LVDS(8bit)	LVDS(10bit) DP	LVDS(10bit)/eDP/V by One (8 Lanne)	2Ch. LVDS HDMI
Input Voltage	12V	12V	12V/24V	12V/24V	12V/24V	12V/24V	12V/24V	12V/24V	12V/24V
Video Buffer	Line Buffer	Line Buffer	Line Buffer	Line Buffer	Frame Rate Buffer	Frame Rate Buffer	Frame Rate Buffer	Frame Rate Buffer	-
Sound	-	2W + 2W	-	2W + 2W	5W + 5W	5W + 5W	10W +10W	10W x 10W	

\*LS: Ambient Light Sensor

## Accessories



DVI



VGA



RS232



USB



Power Adaptor



Power Cord  
(110V / 220V)

\*\* The above specification can be modified or changed without prior notification.

Easy and Simple Technology



Easy & Simple Technology

SOUTH KOREA HEADQUARTERS

Rm705, 149, Gongdan-ro  
Gunpo-si, Gyeonggi-do  
15845  
Seoul, South Korea

Phone: 82 31 427 8101 (-07)  
Sales: [sales@estecom.co.kr](mailto:sales@estecom.co.kr)

UNITED STATES

991 Richard Avenue  
Santa Clara, CA 95050  
Phone: (408) 496-6723  
Fax: (408) 457-6720

Product Info: [www.estecom-usa.com](http://www.estecom-usa.com)  
Sales Info: [sales@estecom-usa.com](mailto:sales@estecom-usa.com)  
Technical Info: [info@estecom-usa.com](mailto:info@estecom-usa.com)