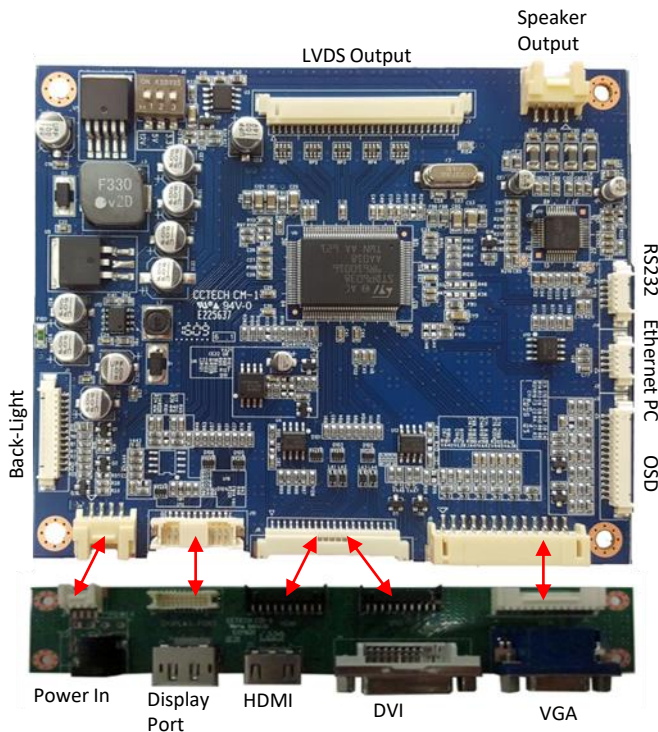


POPPY-S II + Daughter



Estecom's controller board kit is a multi-purpose LCD controller that was designed for industrial LCD monitors and can be used for a number of industrial and commercial display applications. All solutions can be applied to open frame display that employs the latest LCD technology to ensure high reliability and the best user experience

ESTECOM Controller Board Kit series



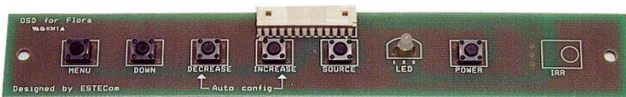
Application

- Perfect for FHD Slim Designed Digital Signage
- Video Wall & Entertainment
- Information & Advertising Panel

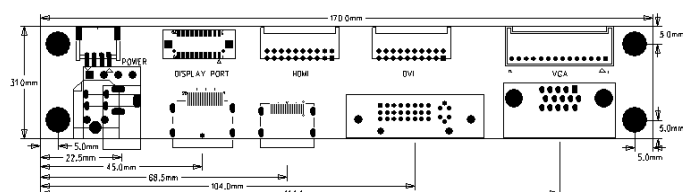
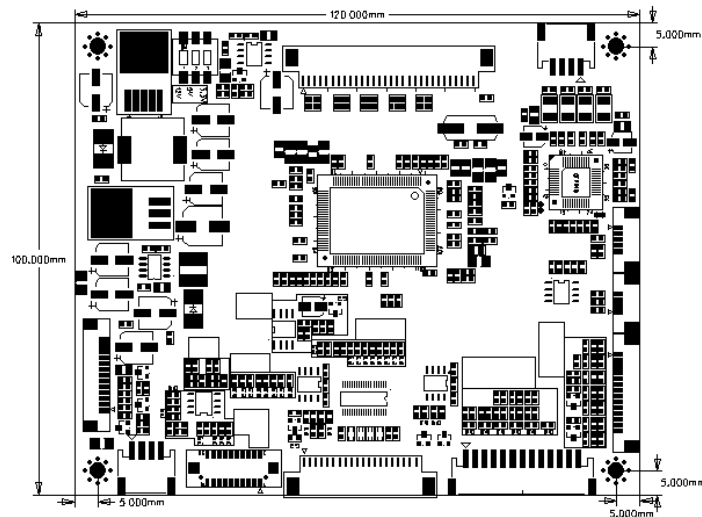


Features

- Model : POPPY-S II + Daughter Board
- Analog RGB+DVI or HDMI / DP
- Support up to WUXGA @60Hz.
- Compatible standard SVGA, XGA & SXGA VESA timing
- Easy & Simple user I/F OSD Menu.
- VESA DDC 1/2B compliant.
- Compliant to VESA DPMS Power "Energy" Saving Mo
- Operating Temp. : -20 °C ~ 70 °C
- +12V DC single power.
- True color (16.7M) data processing & display driving.



Menu(Enter)/Down(Auto Config.)/Decrease(Left)/Increase(Right)/Source Select(Exit)/Power



Controller Board Kit Line-Up

Designed for demanding environments, the Estecom board series delivers a long life cycle and high performance of experience to a wide range of commercial and industrial applications. All range of boards can be easily implemented into “The Estecom Open Frame family series” will lead you to dynamic digital world with instrument “**drop-in**” designs.

	POPPY-OII	POPPY-S II + (Sub-Board)	IRIS	ORCHID-D	MARIGOLD-I	MARIGOLD-D	SAFFRON	CROCUS	A3188-S (MMB)
Dimension (mm)	96 x 96	100 x 120 (31 x 170)	100 x 80	100 x 150	100 x 150	100 x 150	175 x 145	175x 145	133.3 x 70
Advantages	Compact Size w/ TTL support	Low Profile Perfect for Slim design	FHD signage	All Ground	F/W Upgrade Tool	F/W Upgrade Tool	Daisy chain w/ clone & distribution Best for Video Wall		VA & Cost-to-Benefit ratio solution
Key Features	RS232, IR	RS232, IR	RS232, IR	RS232, IR, LS*	HDMI, RS232, IR, LS*	DP, RS232, IR, LS*	Daisy chain w/ clone & distribution, PIP, RS232, LS*	HDMI 2.0, DP1.2, 4K	Android or Linux
Max. Resolution	1920 x 1200	1920 x 1200	1920 x 1200	1920 x 1200	1920 x 1200	1920 x 1200	2560 x 1600	4096 x 2160	1920 x 1080
Input	VGA/DVI	VGA/DVI/HDMI/DP	HDMI	VGA/DVI	VGA/HDMI/DP	VGA/DVI/DP	VGA/DVI/HDMI/DP	VGA/DPx2HDMI x 2	-
Output	LVDS(8bit) TTL	LVDS(8bit)	LVDS(8bit)	LVDS(8bit)	LVDS(8bit)	LVDS(8bit)	LVDS(10bit) DP	LVDS(10bit)/eDP/V by One (8 Lanne)	2Ch. LVDS HDMI
Input Voltage	12V	12V	12V/24V	12V/24V	12V/24V	12V/24V	12V/24V	12V/24V	12V/24V
Video Buffer	Line Buffer	Line Buffer	Line Buffer	Line Buffer	Frame Rate Buffer	Frame Rate Buffer	Frame Rate Buffer	Frame Rate Buffer	-
Sound	-	2W + 2W	-	2W + 2W	5W + 5W	5W + 5W	10W +10W	10W x 10W	

*LS : Ambient Light Sensor

Accessories



DVI



VGA



RS232



USB



Power Adaptor



Power Cord (110V / 220V)

** The above specification can be modified or changed without prior notification.

UNITED STATES HEADQUARTERS

SOUTH KOREA HEADQUARTERS