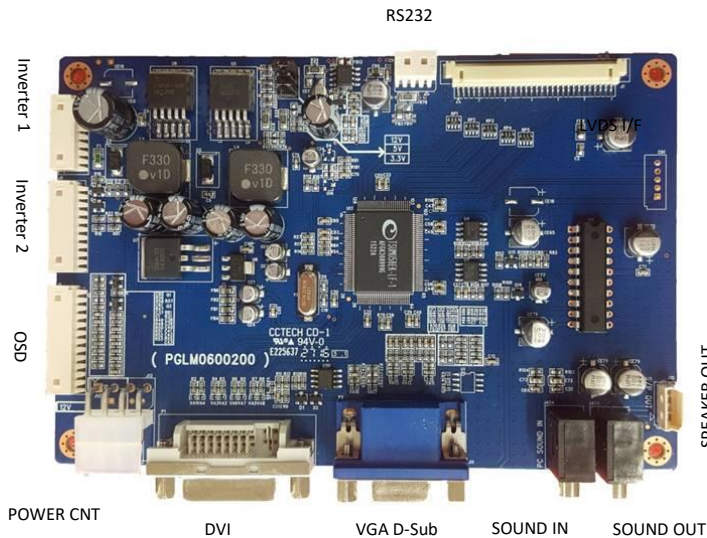




Estecom's controller board kit is a multi-purpose LCD controller that was designed for industrial LCD monitors and can be used for a number of industrial and commercial display applications. All solutions can be applied to open frame display that employs the latest LCD technology to ensure high reliability and the best user experience



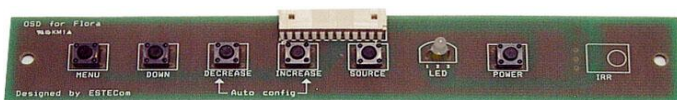
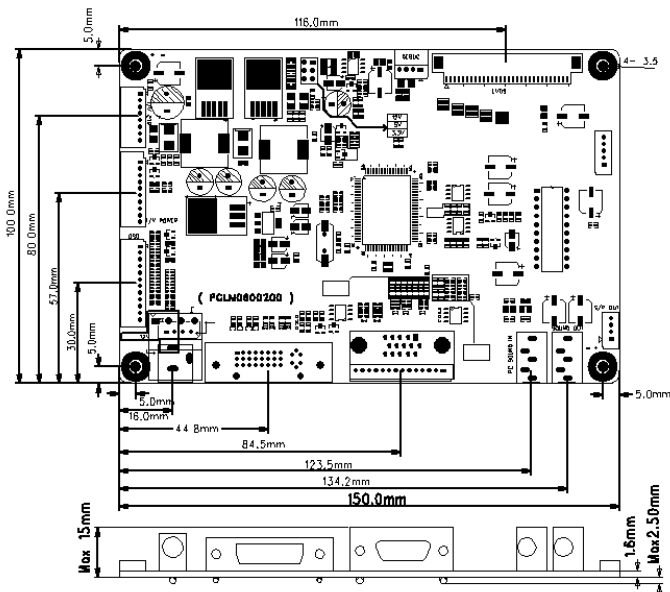
Application

- Good to Any Solutions
- Video Wall & Entertainment
- Information & Advertising Panel
- Kiosk, POS & Digital Signage
- Multi-Touch Table



Features



- Model : ORCHID-D
- Analog RGB / DVI
- Support up to WUXGA @60Hz.
- Compatible standard SVGA, XGA & SXGA VESA timing.
- Easy & Simple user I/F OSD Menu.
 - Multi-Language support.
- VESA DDC 1/2B compliant.
- Compliant to VESA DPMS Energy Saving Mode.
- Operating Temp. : -20°C ~ 70 °C
- +12V DC single power
 - recommended 48W AC/DC power adaptor.
- +24V DC for large formatted panel.
- True color(16.7M) data processing & display driving.



Menu Down Decrease Increase Source Select Power(Auto)

Controller Board Kit Line-Up

Designed for demanding environments, the Estecom board series delivers a long life cycle and high performance of experience to a wide range of commercial and industrial applications. All range of boards can be easily implemented into "The Estecom Open Frame family series" will lead you to dynamic digital world with instrument "drop-in" designs.

| | POPPY-OII | POPPY-S II (Sub-Board) | IRIS | ORCHID-D | MARIGOLD-I | MARIGOLD-D | SAFFRON | CROCUS | A3188-S (MMB) |
|-----------------|---|---|---|---|---|---|--|---|---|
| |  |  |  |  |  |  |  |  |  |
| Dimension (mm) | 96 x 96 | 100 x 120 (31 x 170) | 100 x 80 | 100 x 150 | 100 x 150 | 100 x 150 | 175 x 145 | 175x 145 | 133.3 x 70 |
| Advantages | Compact Size w/ TTL support | Low Profile Perfect for Slim design | FHD signage | All Ground | F/W Upgrade Tool | F/W Upgrade Tool | Daisy chain w/ clone & distribution Best for Video Wall |  | VA & Cost-to-Benefit ratio solution |
| Key Features | RS232, IR | RS232, IR | RS232, IR | RS232, IR, LS* | HDMI, RS232, IR, LS* | DP, RS232, IR, LS* | Daisy chain w/ clone & distribution, PIP, RS232, LS* | HDMI 2.0, DP1.2, 4K | Android or Linux |
| Max. Resolution | 1920 x 1200 | 1920 x 1200 | 1920 x 1200 | 1920 x 1200 | 1920 x 1200 | 1920 x 1200 | 2560 x 1600 | 4096 x 2160 | 1920 x 1080 |
| Input | VGA/DVI | VGA/DVI/HDMI/DP | HDMI | VGA/DVI | VGA/HDMI/DP | VGA/DVI/DP | VGA/DVI/HDMI/DP | VGA/DPx2HDMI x 2 | - |
| Output | LVDS(8bit) TTL | LVDS(8bit) | LVDS(8bit) | LVDS(8bit) | LVDS(8bit) | LVDS(8bit) | LVDS(10bit) DP | LVDS(10bit)/eDP/V by One (8 Lanne) | 2Ch. LVDS HDMI |
| Input Voltage | 12V | 12V | 12V/24V | 12V/24V | 12V/24V | 12V/24V | 12V/24V | 12V/24V | 12V/24V |
| Video Buffer | Line Buffer | Line Buffer | Line Buffer | Line Buffer | Frame Rate Buffer | Frame Rate Buffer | Frame Rate Buffer | Frame Rate Buffer | - |
| Sound | - | 2W + 2W | - | 2W + 2W | 5W + 5W | 5W + 5W | 10W +10W | 10W x 10W | - |

*LS: Ambient Light Sensor

Accessories



DVI



VGA



RS232



USB



Power Adaptor



Power Cord
(110V / 220V)

** The above specification can be modified or changed without prior notification.