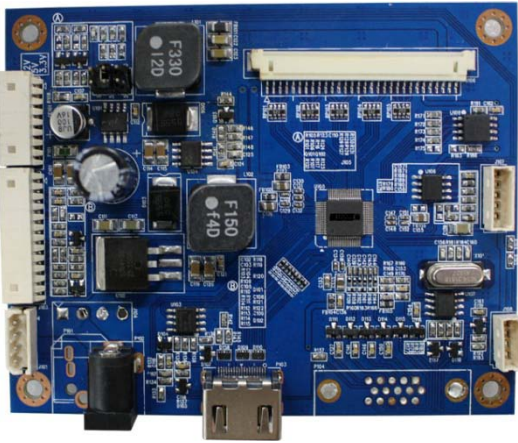


IRIS (SGLM0601300)

ESTECOM LCD controller



Features

IRIS is an advanced TFT-LCD Monitor Control Board. This design Enables a full conventional CRT monitor and/or video replacement with a large size Active Matrix LCD module.

It is suitable for video resolution up to WUXGA(1920x1200 @ 60Hz) in all video modes, the full display area of the module is used.

The design is implemented as a single printed circuit board.

Board Dimension

100x80 mm

Input Signal

HDMI , RGB(TBD)

Output Signal

2CH LVDS

Maximum Resolution

1920x 1200 @60Hz

Local Control

OSD (On Screen Display) and IR

Remote Control (UART)

RS-232 support

Input Power Voltage

+12VDC or +24VDC

Operating Temperature

-20°C ~70°C

Storage Temperature

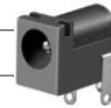
-30°C ~80°C

Humidity

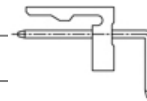
8% ~ 90%

Power connector option

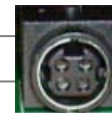
- 2.5Ø DC Jack



- LA1143_4 (Hanlim) 3.96mmpitch



- Power DIN Jack



Weight & Packing Dimension

TBD

Certification

TBD

For more detail, please referring Full data sheet

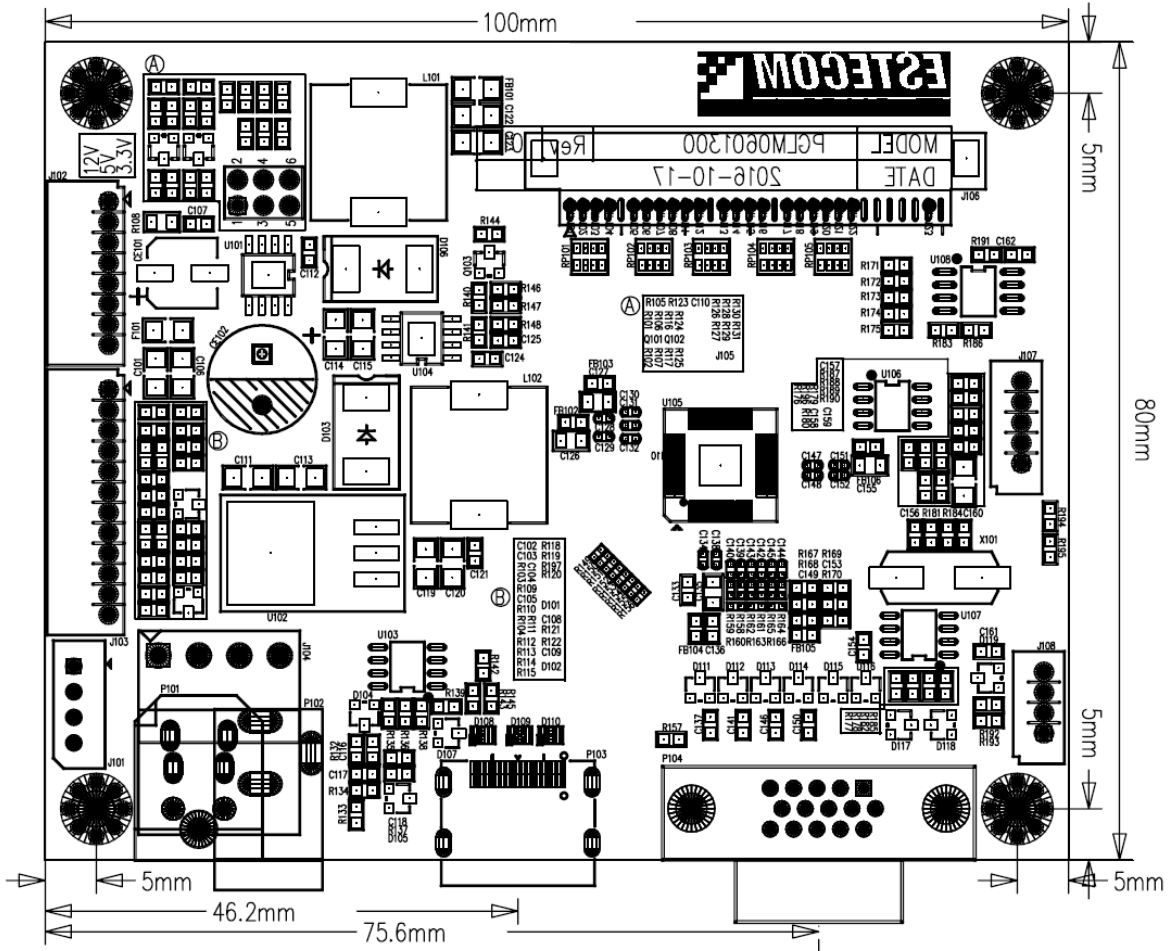
Ordering Information

SGLM0601300

IRIS (SGLM0601300)

ESTECOM LCD controller

Dimensions



ESTECOM LCD Controller series

KOREA HEADQUARTERS

Rm705, 149, Gongdan-ro Gunpo-si, Gyeonggi-do

Seoul, Korea

Phone : +82-31-427-8101

Product Info : www.estecom.co.kr

Sales Info : sales@estecom.co.kr

Technical Info : tech@estecom.co.kr