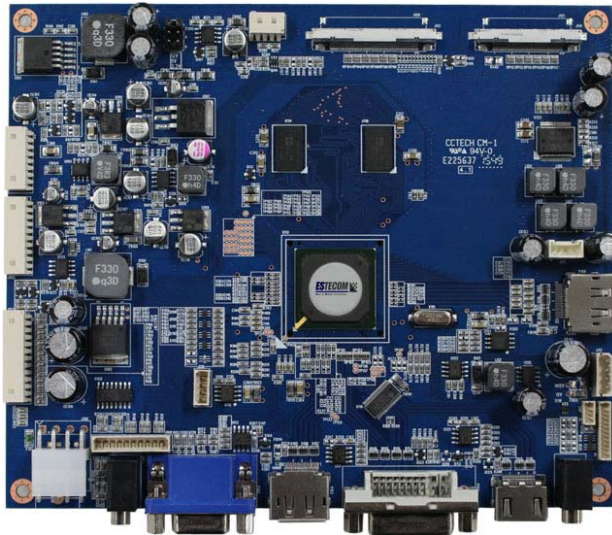


Saffron (SGLM010300X)

ESTECOM LCD controller



Features

Saffron is an advanced Industrial grade TFT-LCD Monitor Control Board. **Supporting Frame Buffer** function. This design Enables a full conventional CRT monitor and/or video replacement with a large size Active Matrix LCD module.

Saffron can support UART communication through Displayport cable.

It is suitable for video resolution up to WQXGA(2560x1600 @ 60Hz) in all video mode.

Special features.

- Video wall function by DP loop through (Daisy Chain)
- 120Hz panel support without additional FRC board.

Board Dimension

175x 145mm

Input Signal

RGB , Y/Pb/Pr, HDMI, DVI (Dual link), Displayport

Output Signal

4CH LVDS, Displayport

Maximum Resolution

2560x 1600 @60Hz

Local Control

OSD (On Screen Display) and IR

Remote Control (UART)

RS-232, Displayport AUX channel.

Input Power Voltage

+24VDC or +12VDC

Operating Temperature

-20°C ~70°C

Storage Temperature

-30°C ~80°C

Humidity

8% ~ 90%

Power connector option

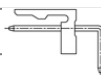
- Power DIN Jack



- 5268-04 / 5267-04 (Molex) 2.54mmpitch



- LA1143-04 / LW1143-4 (Hanlim)



Weight & Packing Dimension

TBD

Certification

TBD

For more detail, please referring Full data sheet

Ordering Information

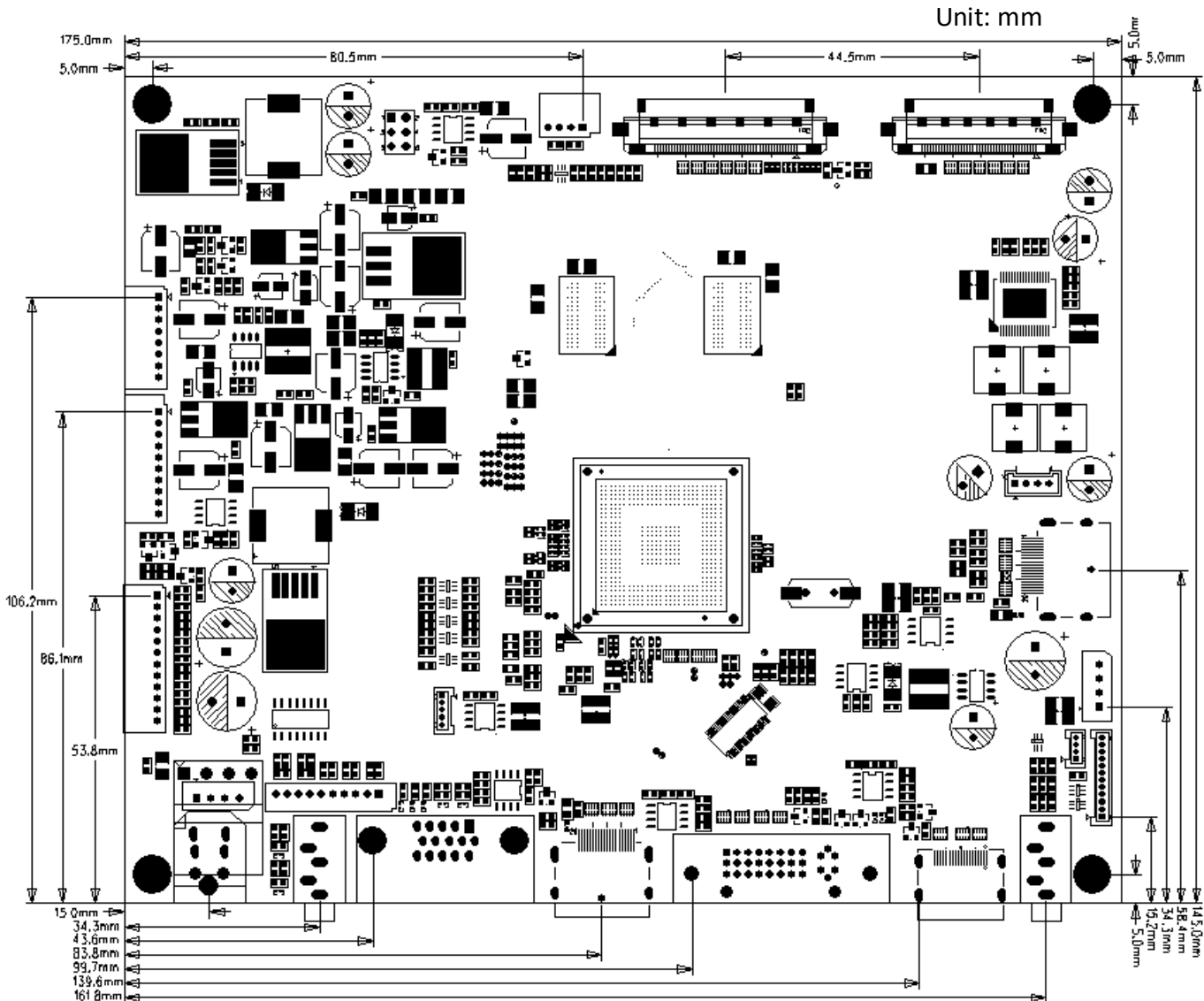
See next page.

Saffron (SGLM010300X)

Ordering Information

Board part no	Input (V)	Input Connector
SGLM0103002	24V	5267-04
SGLM0103003	24V	Power DIN Jack + 5267-04

Dimensions



ESTECOM LCD Controller series

KOREA HEADQUARTERS

Rm705, 149, Gongdan-ro Gunpo-si, Gyeonggi-do

Seoul, Korea

Phone : +82-31-427-8101

Product Info : www.estecom.co.kr

Sales Info : sales@estecom.co.kr

Technical Info : tech@estecom.co.kr