

Dash Mount GPS/GNSS, WiFi + MiMo 4G/3G/2G Antenna

BATGM[F][2]-7-38-24-58

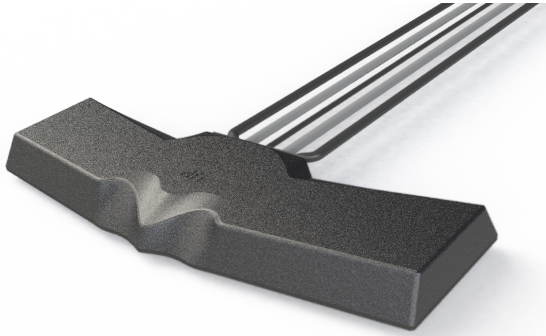
Dash Mount 4G/3G/2G Antenna with optional GPS/GNSS & optional (MiMo) WiFi

- Mount on or under dashboard
- MiMo 4G/3G/2G functionality
- Optional SiSo or MiMo WiFi
- GPS/GNSS 26dB LNA

The Panorama BATG range is designed for Telematics applications requiring high speed data with MiMo 4G and fallback 3G/2G support along with optional positioning through GPS/GNSS, and optional dual band 2.4/5.0GHz Wifi.

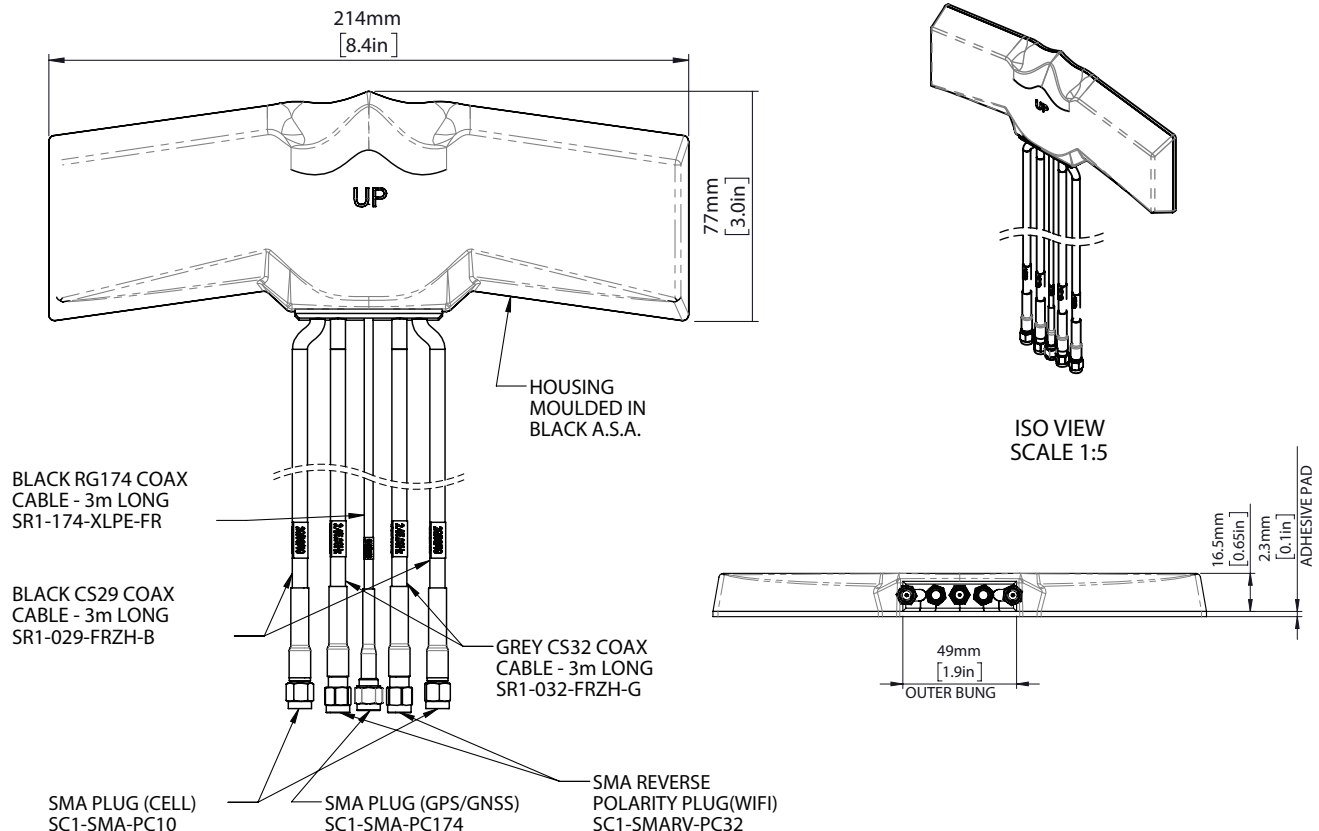
The isolated dual 4G/3G/2G antennas cover 698-960/1710-3800MHz and the efficient element design ensures a high first time connection rate and an ongoing, robust communications link even in many low coverage areas.

The antenna is designed to be mounted on or under a vehicle dashboard but can be mounted on any non-conductive surface. The BAT range is supplied with up to five integrated low loss cables which are flame retardant and meet the requirements of UN118.01.



Technical Drawing

BATGM2-7-38-24-58 shown



Dash Mount GPS/GNSS, WiFi + MiMo 4G/3G/2G Antenna

BATGM[F][2]-7-38-24-58

Product Data

Part No.		BATGM2-7-38-24-58	BATGMF2-7-38-24-58	BATGM-7-38-24-58	BATGMF-7-38-24-58
Electrical Data					
Frequency Range (MHz)	Elements 1&2	698-960/1710-3800			
	Element 3	1562-1612MHz			
	Element 4	2.4/5.0GHz			
	Element 5	2.4/5.0GHz	-		
Peak Gain†	Elements 1&2	2dBi (698-960MHz) / 3dBi (1710-2170MHz) / 5dBi (2500-3800MHz)			
	Element 4	4dBi (2.4GHz) / 5dBi (5.0GHz)			
	Element 5	4dBi (2.4GHz) / 5dBi (5.0GHz)	-		
Typical VSWR*	Elements 1&2	<2.5:1			
	Element 4	<2.5:1			
	Element 5	<2.5:1	-		
Typical Isolation*	Elements 1&2	>10dB			
Pattern	Omni-directional				
Impedance	50Ω				
Max input power (W)	20				
GPS/GNSS Data					
Frequency Range (MHz)	1562-1612MHz				
LNA Peak Gain	26dB				
Typical Voltage	3-5VDC <20ma				
Type Approval	E11				
Mechanical Data					
Dimensions (mm)	Length	214 (8.4")			
	Width	77 (3")			
	Height	16.5 (0.65")			
Operating Temp (°C)	-30° / +70°C (-30° / 158°F)				
Material	ASA				
Colour	Black				
Mounting Data					
Fixing	Adhesive pad				
Cable Data	Elements 1&2 (Cell)	Element 3 (GPS/GNSS)	Element 4 (WiFi)	Element 5 (WiFi)	
Cable Type	FR CS29 (meets UN118.01)	FR RG174 (meets UN118.01)	CS32 (meets UN118.01)	CS32 (meets UN118.01)	
Diameter (mm)	5 (0.2")	2.8 (0.11")	5 (0.2")	5 (0.2")	
Length (m)	3 (10')	3 (10')	3 (10')	3 (10')	
Termination					
BATGMF2-7-38-24-58	2x FAKRA D Jack (Burgundy)	FAKRA C Jack (Blue)	FAKRA I Jack (Beige)	FAKRA I Jack (Beige)	
BATGMF-7-38-24-58	2x FAKRA D Jack (Burgundy)	FAKRA C Jack (Blue)	FAKRA I Jack (Beige)	-	
BATGM2-7-38-24-58	2x SMA Plug (m)	SMA Plug (m)	Rev Pol SMA Plug (f)	Rev Pol SMA Plug (f)	
BATGM-7-38-24-58	2x SMA Plug (m)	SMA Plug (m)	Rev Pol SMA Plug (f)	-	

† Peak gain does not include cable attenuation *VSWR & Isolation measured on 3mm thick ASA with 3m (10') of CS29 cable

Dash Mount GPS/GNSS, WiFi + MiMo 4G/3G/2G Antenna

BATGM[F][2]-7-38-24-58

Product Data

Part No.		
BATG[F]-7-38		
Electrical Data		
Frequency Range (MHz)	Elements 1&2	698-960/1710-3800
	Element 3	1562-1612MHz
Peak Gain†	Elements 1&2	2dBi (698-960MHz) / 3dBi (1710-2170MHz) / 5dBi (2500-3800MHz)
Typical VSWR*	Elements 1&2	<2.5:1
Typical Isolation*	Elements 1&2	>10dB
Pattern	Omni-directional	
Impedance	50Ω	
Max input power (W)	20	
GPS/GNSS Data		
Frequency Range (MHz)	1562-1612MHz	
LNA Peak Gain	26dB	
Typical Voltage	3-5VDC <20ma	
Type Approval	E11	
Mechanical Data		
Dimensions (mm)	Length	214 (8.4")
	Width	77 (3")
	Height	16.5 (0.65")
Operating Temp (°C)	-30° / +70°C (-30° / 158°F)	
Material	ASA	
Colour	Black	
Mounting Data		
Fixing	Adhesive pad	
Cable Data		
	Elements 1&2 (Cell)	Element 3 (GPS/GNSS)
Cable Type	FR CS29 (meets UN118.01)	FR RG174 (meets UN118.01)
Diameter (mm)	5 (0.2")	2.8 (0.11")
Length (m)	3 (10')	3 (10')
Termination		
BATGF-7-27	2x FAKRA D Jack (Burgundy)	FAKRA C Jack (Blue)
BATG-7-27	2x SMA Plug (m)	SMA Plug (m)

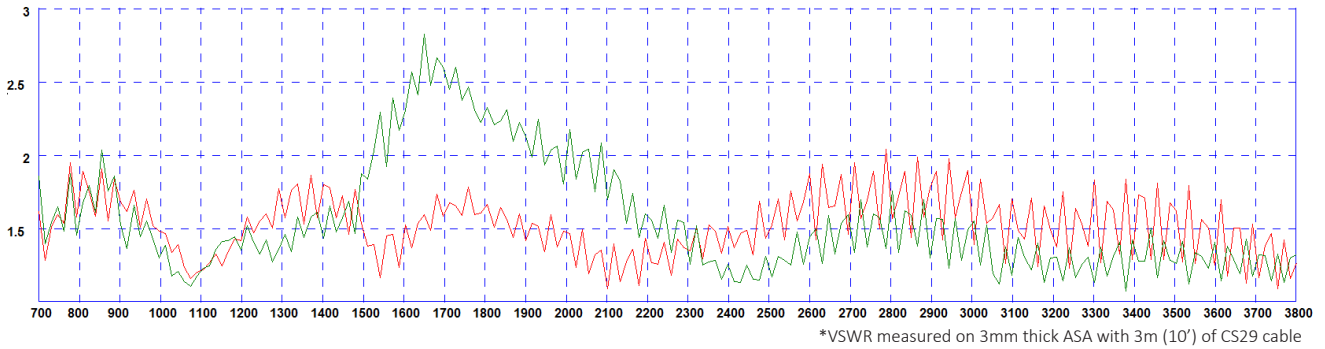
† Peak gain does not include cable attenuation *VSWR & Isolation measured on 3mm thick ASA with 3m (10') of CS29 cable

Dash Mount GPS/GNSS, WiFi + MiMo 4G/3G/2G Antenna

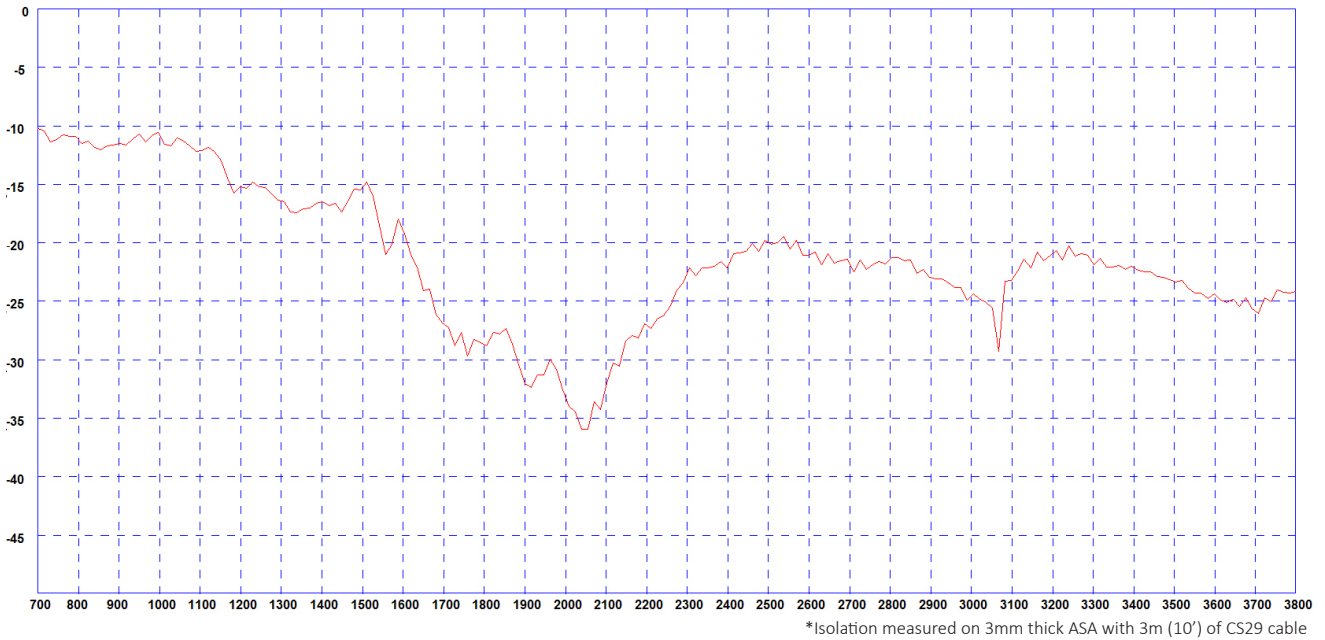
BATGM[F][2]-7-27-24-58

Electrical Data - Cell

Typical VSWR Elements 1&2*

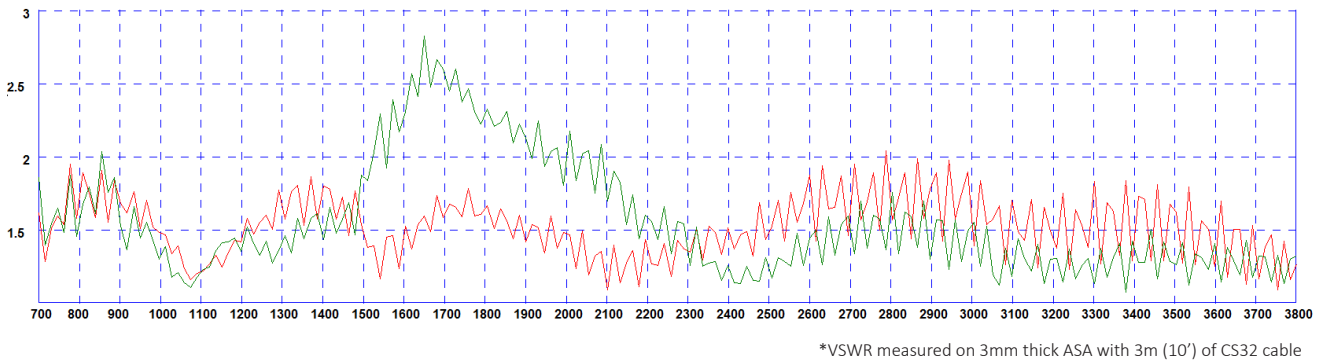


Typical Isolation Elements 1&2*



Electrical Data- WiFi

Typical VSWR Elements 4&5*

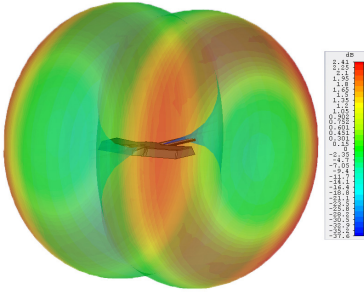


Dash Mount GPS/GNSS, WiFi + MiMo 4G/3G/2G Antenna

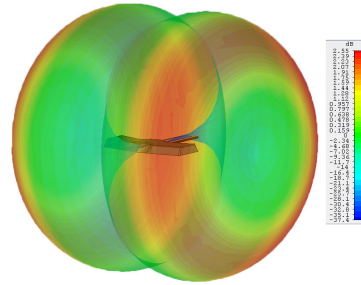
BATGM[F][2]-7-27-24-58

3G Patterns - Cell

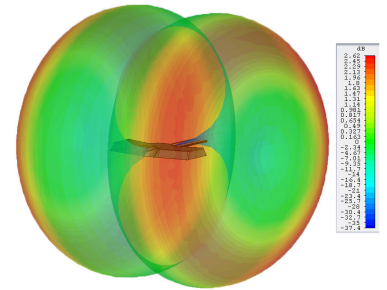
Typical 3D Pattern - 700MHz Elements 1&2 fed



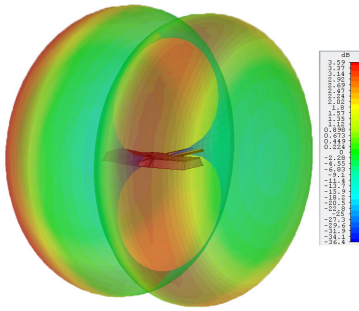
Typical 3D Pattern - 800MHz Elements 1&2 fed



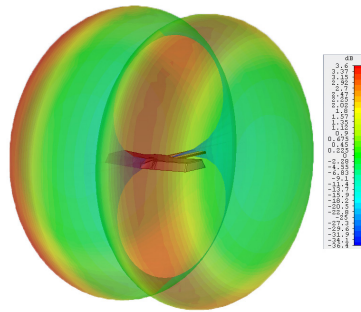
Typical 3D Pattern - 900MHz Elements 1&2 fed



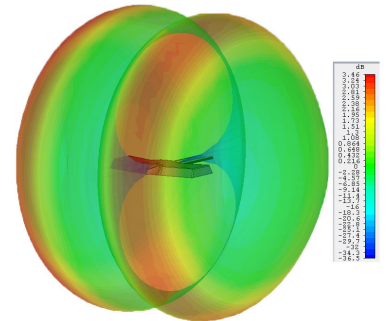
Typical 3D Pattern - 1800MHz Elements 1&2 fed



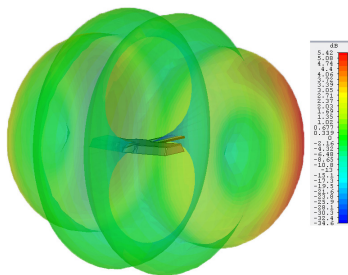
Typical 3D Pattern -1900MHz Elements 1&2 fed



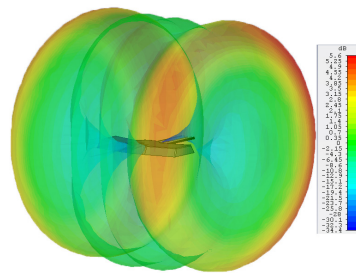
Typical 3D Pattern - 2100MHz Elements 1&2 fed



Typical 3D Pattern - 2600MHz Elements 1&2 fed

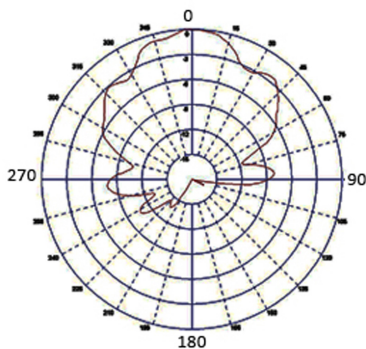


Typical 3D Pattern -3600MHz Elements 1&2 fed

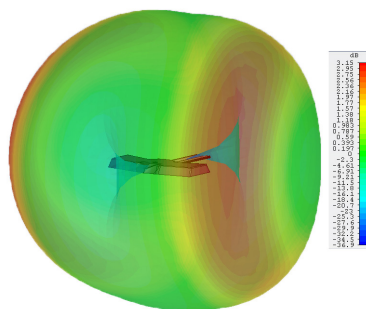


Pattern -GNSS

Typical E Plane GPS/GNSS - 1575MHz Element 3



Typical 3D Pattern - 2.4GHz Elements 4&5 fed



Typical 3D Pattern - 5.4GHz Elements 4&5 fed

