

# 10.4" Open Frame



ESTECOM's open frame monitors are an optimized solutions well-designed for various industrial applications. Our products offer perfect features with brilliant visual performance which is most suitable for demanding applications such as Digital Signage, Kiosk, Medical, Gaming, Military etc. ESTECOM's quality proven display solutions will always exceed your expectations.

## Features

- Full control of all relevant display and interface parameters via OSD
- Compliant with safety regulations
- VGA / DVI
- High reliability against humidity, temperature & impact
- Color of frame is optimized and best solution for environment

## Application

- Information Kiosk
- Transportation (Bus & Airport & Train)
- Advertisement in shopping malls
- Gaming
- Amusement
- Digital Signage

## Ordering Information

Part Number	Description
GEOA104AU-OD01-AT	10.4" 230nit, PCAP touch for Industrial & Digital Signage

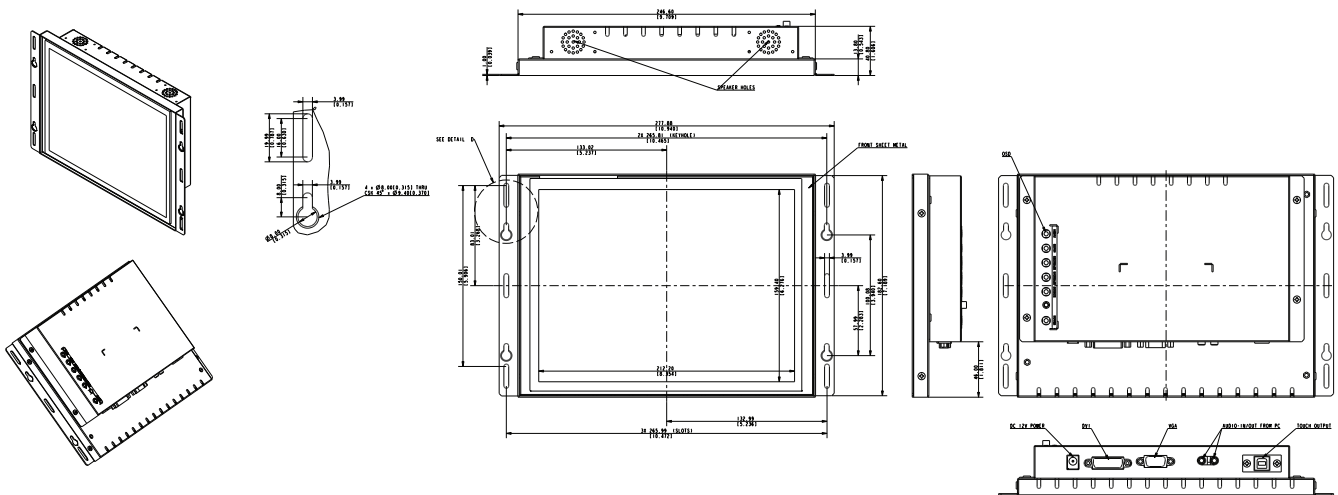


We build products  
that satisfy  
our customers  
with high quality.



## 10.4" Open Frame

### Form Factor



### Specification

Controller Board		Orchid-D developed by Estecom (Please ask for full board specification to sales@estecom.co.kr)
Display	Resolution	800 x 600
	Aspect Ratio	4 : 3
	Contrast Ratio	500 : 1
	Brightness	230nit
	Viewing Angle	80/80/60/70 (L/R/U/D)
Touch Screen	Type	PCAP, 10Point
OSD Control	OSD Function Key	6 Buttons OSD Board (SGLM0001200) Menu / UP / Down (Auto Config) / Decrease / Increase / Exit
Power	Power Input	12V
Environment	Operating Temp.	-20C~70C
General	Ingress Protection	N/A

#### ESTECOM Co., Ltd

Rm705, 149, Gongdan-ro,  
Gunpo-si, Gyeonggi-do, Korea  
Phone : 82 (31) 427-8101 Fax : 82 (31) 427-8108  
sales@estecom.co.kr

#### ESTECOM-USA

991 Richard Avenue  
Santa Clara, CA 95050  
Phone : (408) 496-6723 Fax : (408) 457-6720  
sales@estecom-usa.com