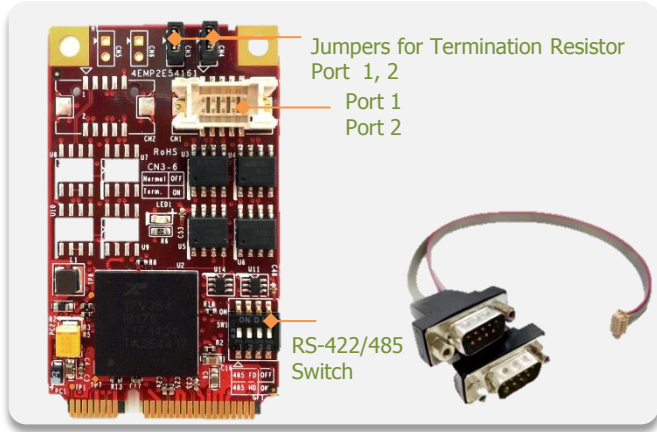


# EMP2-X202

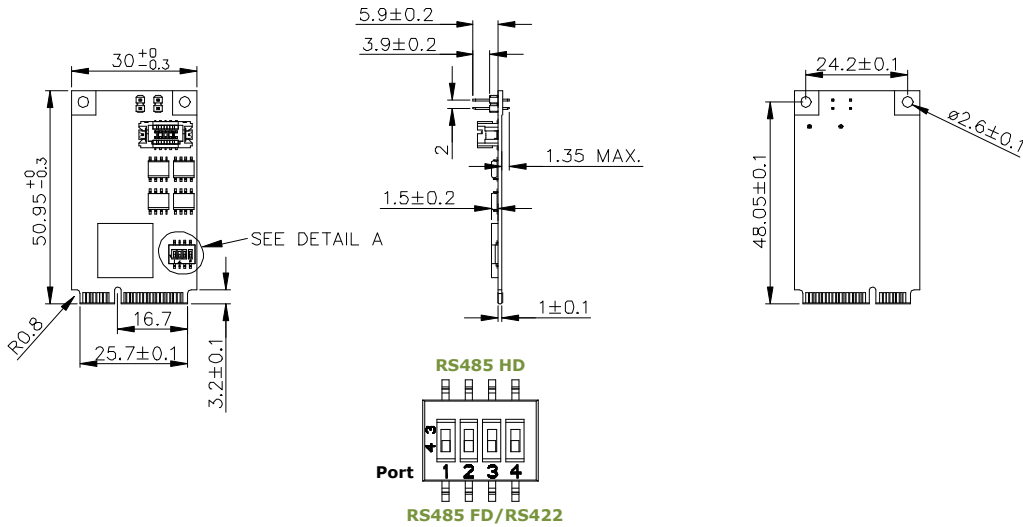
## mPCIe to two RS-422/485 Module



### Features

- PCIe 2.0 compliant. RS-422/485 mode configurable by switch. Supports 485HD(Half Duplex) and 485FD(Full Duplex)
- Up to 25 Mbps serial data rate. 16C550 compatible. 256-byte FIFOs
- Industrial temperature(-40 °C to 85 °C) operation.
- Flexible design with DB-9 connectors and cable.
- Termination Resistor by jumper setting.
- ESD up to 15KV(Electrostatic Discharge) protection circuit to prevent system damage.
- 30μ " golden finger, 3 years warranty.
- Industrial design, manufactured in innodisk Taiwan

### Mechanical Drawing



Pin Assignment

RS-485/RS-422 Full duplex	Pin	RS-485 Half duplex
TX-	1	D-
TX+	2	D+
RX+	3	
RX-	4	
GND	5	GND
	6	
	7	
	8	
	9	

### Specifications

**Headquarters (Taiwan)**  
5F., No.237, Sec. 1, Datong Rd., Xizhi Dist., New Taipei City 221, Taiwan

Tel: +886-2-7703-3000  
Email: sales@innodisk.com

**Branch Offices:**

**USA**  
[usasales@innodisk.com](mailto:usasales@innodisk.com)  
+1-510-770-9421

**Europe**  
[esusales@innodisk.com](mailto:esusales@innodisk.com)  
+31-040-282-1818

**Japan**  
[jpsales@innodisk.com](mailto:jpsales@innodisk.com)  
+81-45-594-7581

**China**  
[sales\\_cn@innodisk.com](mailto:sales_cn@innodisk.com)  
+86-755-21673689

[www.innodisk.com](http://www.innodisk.com)

© 2015 Innodisk Corporation. All right reserved. Specifications are subject to change without prior notice.

January 27, 2016

Form-Factor	mPCIe
Input I/F	PCI Express 2.0 x 1
Output I/F	RS-422/485
Output Connector	DB-9 x 2
TDP	0.33W (3.3V x 100mA)
Dimension (WxLxH)	30 x 50.9 x 8.25 mm
Temperature	Operation: W/T: -40°C ~ +85°C Storage: -55°C ~ +95°C
Environment	Vibration: 5G @7~2000Hz, Shock: 50G @ 0.5ms
Notes	Please download driver from MyInnodisk website. Windows: XP(32 bit), 7(32/64 bit), 8/8.1(32/64 bit), 10, WES7, CE7.0 Linux: Kernel 2.6.x and above.(We can provide Linux source for modification.)

### Order information

**EMP2-X202-W1(Wide Temp.)**  
mPCIe to 2 x 422/485 Module